

PROVIDENCE, R.I.
CITY ENGINEER'S OFFICE
STREET LINE DEPT.

Jan. 11. 1924.

046717

Note. The area declared a public highway is indicated by the letters ABCDE, and the lines thus fixed conform to the "Field Farm Plat, No. 4." recorded on card 1061 in the office of the Recorder of Deeds.

PLAT OF VIRGINIA AVENUE

FROM BAKER ST. TO ELLENFIELD ST.

SCALE 40 FEET PER INCH.

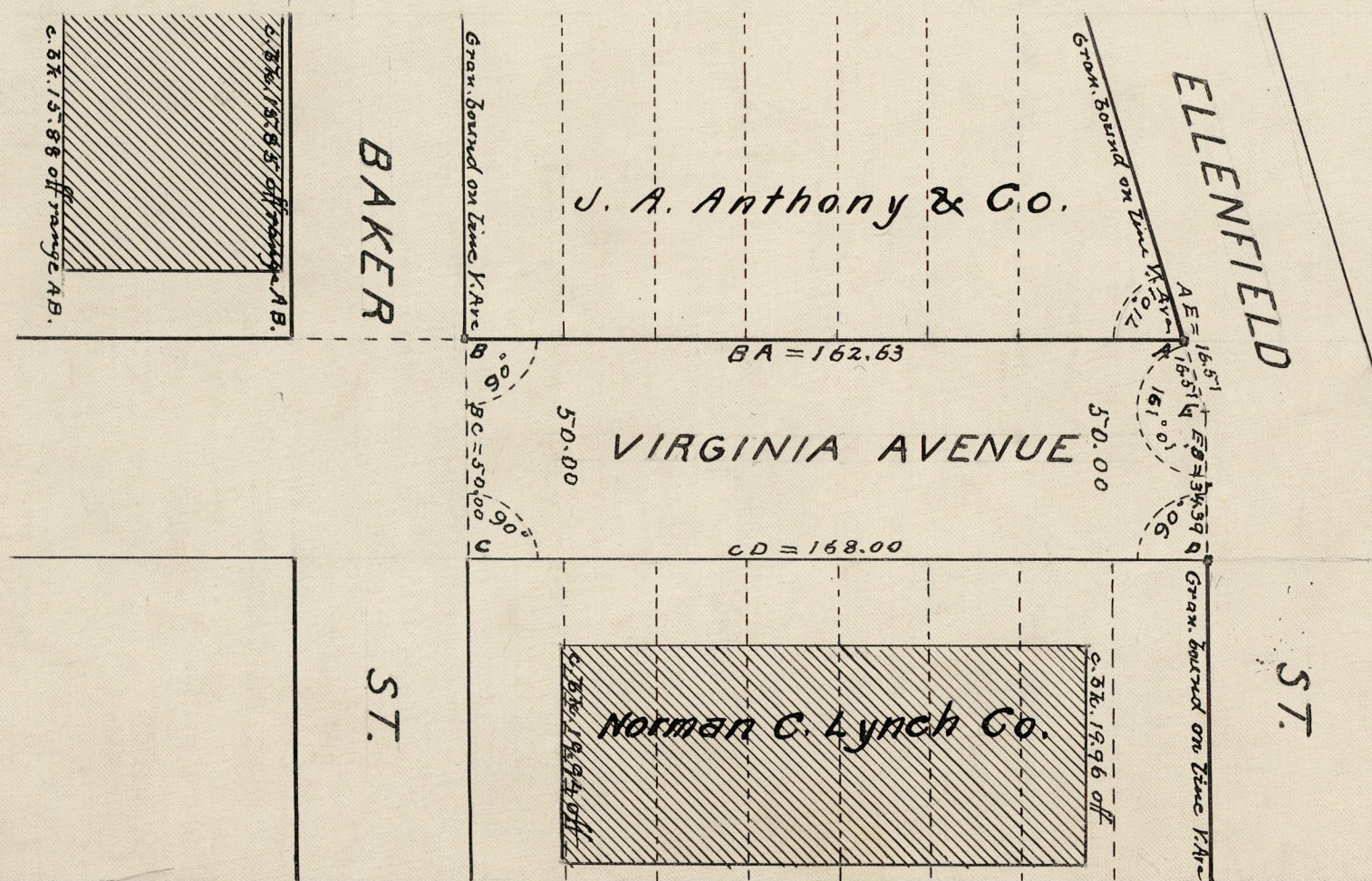
DECLARED A PUBLIC HIGHWAY BY RESOLUTION
OF THE BOARD OF ALDERMEN

August 2, 1923.

162.63
168.00
2330.63
165.315



Witness _____
City Clerk.



OFFICE No. 22641
DRAWER " 81
SHEET " J-46