

T.F.C. 2357-42

PROVIDENCE, R.I.
CITY ENGINEER'S OFFICE

STREET LINE DEPT.

Dec. 28, 1923.

046685

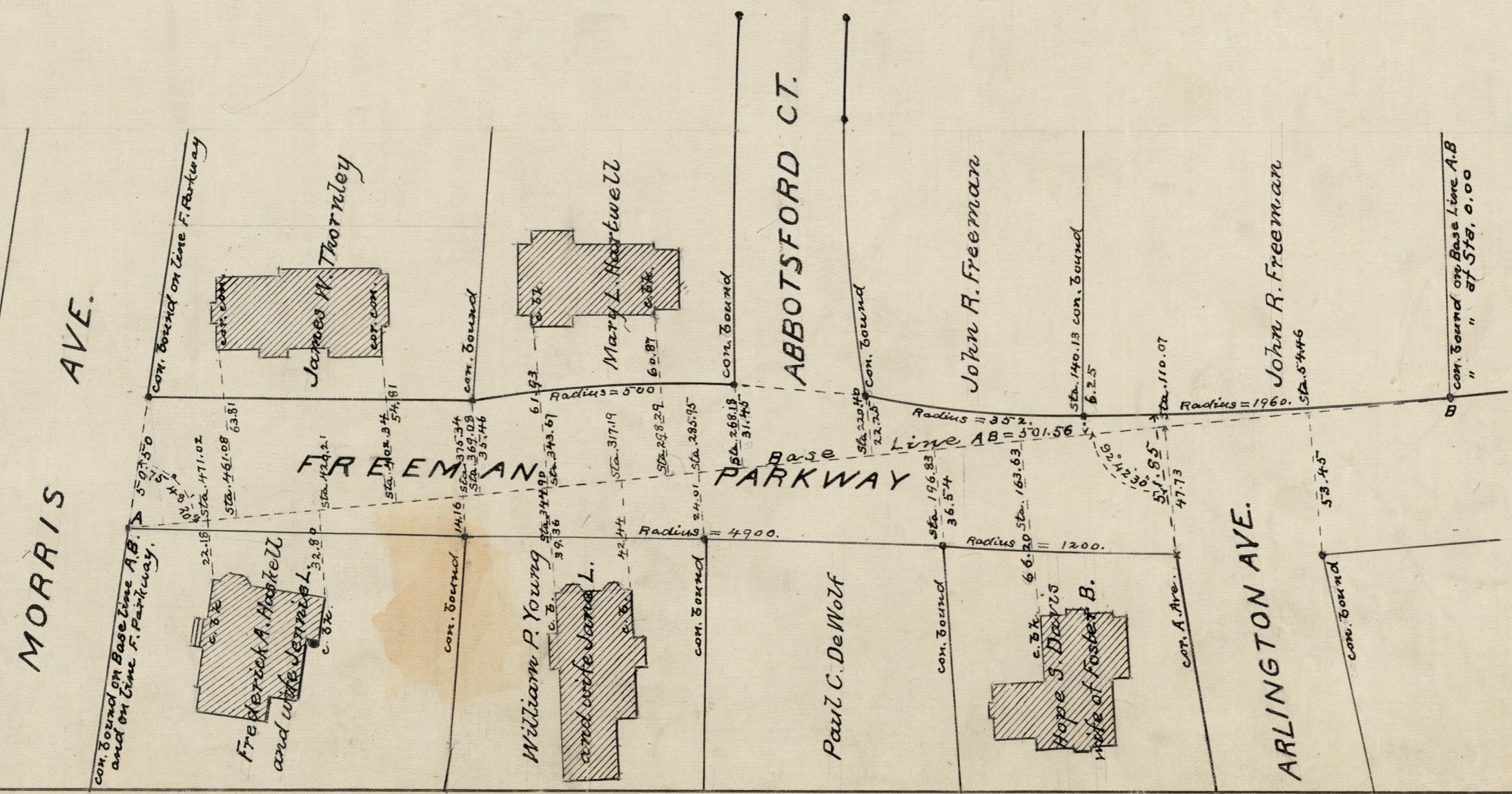
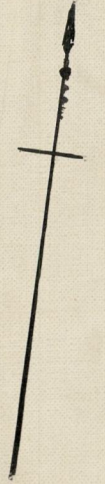
Note. The lines of Freeman Parkway are marked by concrete bounds, shown on the John R. Freeman Plat No. 2, recorded on plat card 1048 in the office of the Recorder of Deeds. These bounds are located on this plat by stations on, and distances from, the Base Line A.B.

PLAT OF FREEMAN PARKWAY FROM MORRIS AVE TO ARLINGTON AVE. SCALE 50 FEET PER INCH.

Declared a public highway by Resolution of the
Board of Aldermen
June 21, 1923.

501.56
57.46
447.10

Witness, _____
City Clerk.



OFFICE No. 22637
DRAWER " 81
SHEET " J-455