

PROVIDENCE, R.I.
CITY ENGINEER'S OFFICE
STREET LINE DEPT.
Oct. 31, 1923
046574

NOTE The area declared a public highway is indicated by the letters ABCD.

The lines thus fixed conform to the deeds in Deed Book 561 page 463, Deed Book 617 page 400, Deed Book 617 page 401 in the office of the Recorder of Deeds.

PLAT OF ALEXANDER STREET

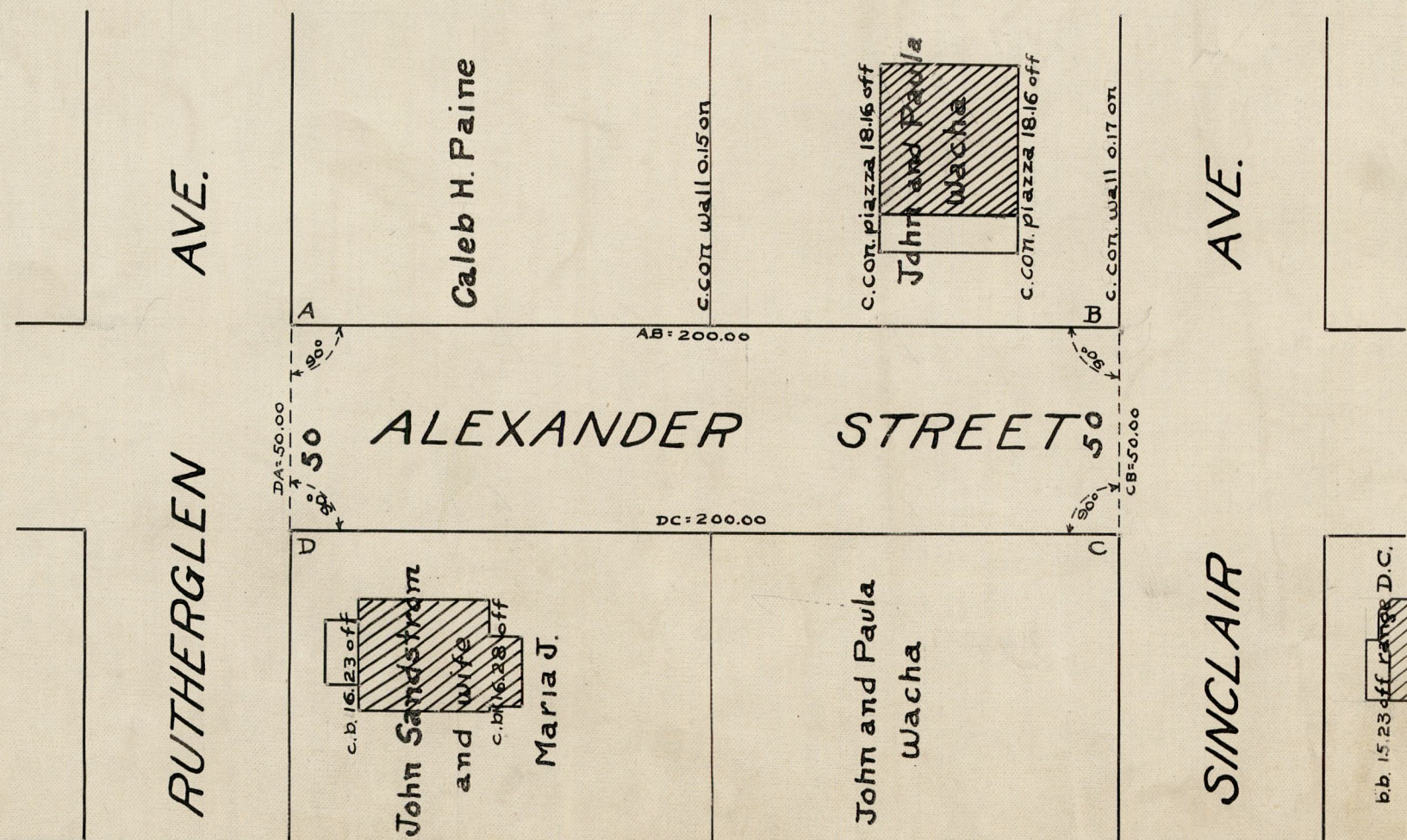
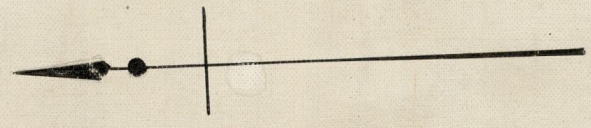
FROM RUTHERGLEN AVE. TO SINCLAIR AVE
SCALE 40 FEET PER INCH

DECLARED A PUBLIC HIGHWAY BY RESOLUTION
OF THE BOARD OF ALDERMEN

July 21, 1923.

200.00

Witness, _____
City Clerk.



OFFICE No. 22590
DRAWER " 81
SHEET " J-44