

NOTE The area declared a public highway is indicated by the letters ABCD.

The lines thus fixed con form to the deed in Deed Book 308 page 173 in the office of the Recorder of Deeds.

PLAT OF EUROPE STREET

FROM ARTHUR AVE. TO AMERICA ST

SCALE 40 FEET PER INCH

DECLARED A PUBLIC HIGHWAY BY RESOLUTION

OF THE BOARD OF ALDERMEN

July 21, 1923.

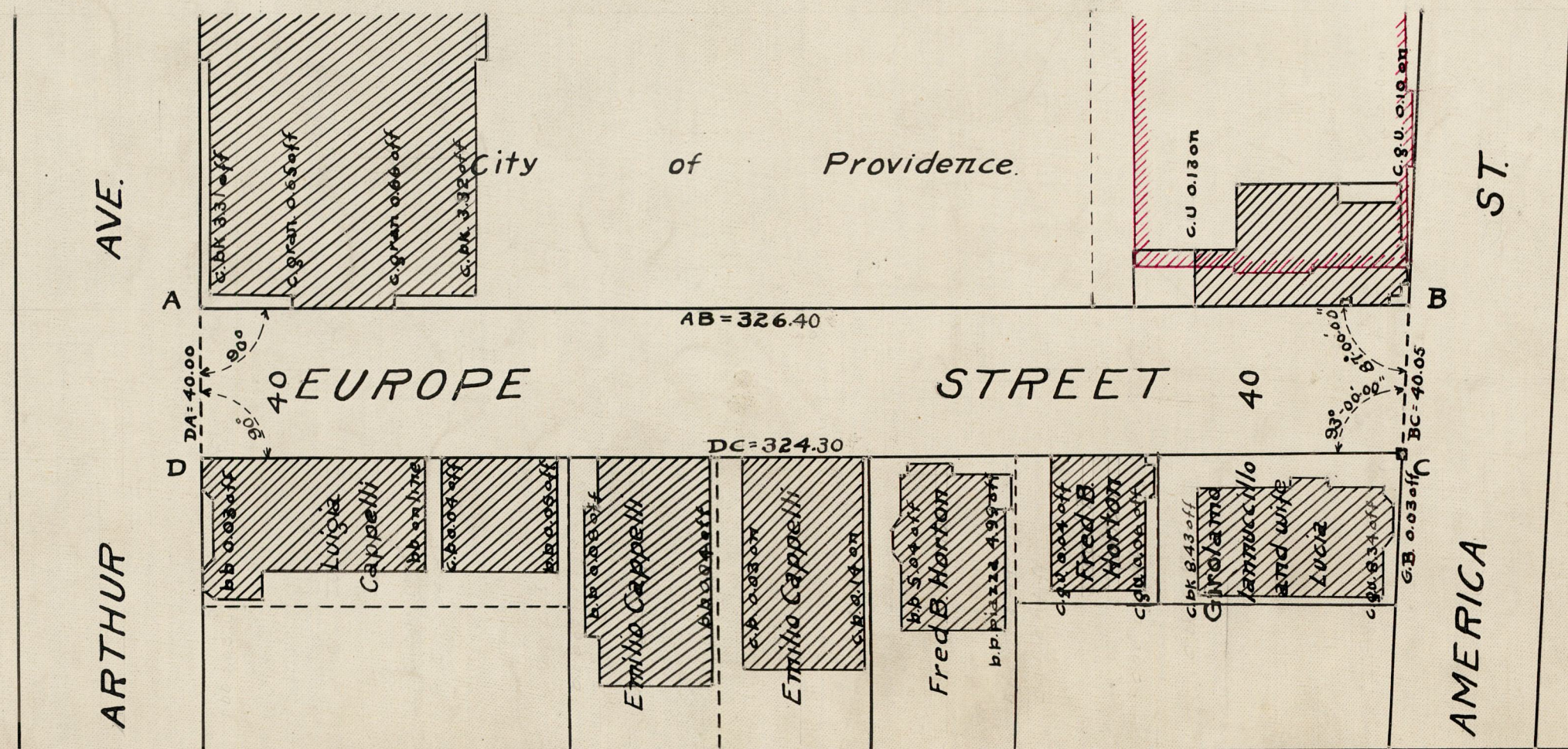
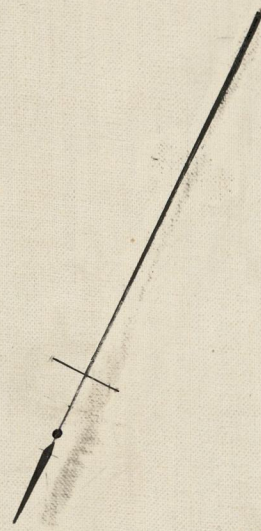
326.40
324.30
2650.70
325.35

Witness, _____
City Clerk.

PROVIDENCE, R.I.
CITY ENGINEER'S OFFICE
STREET LINE DEPT.

Oct. 26, 1923

046568



OFFICE No. 22582
DRAWER 81
SHEET J-43