

PROVIDENCE, R.I.  
CITY ENGINEER'S OFFICE  
STREET LINE DEPT.

Oct 18, 1923

046547

NOTE. The area declared a public highway is indicated by the letters ABCDE.

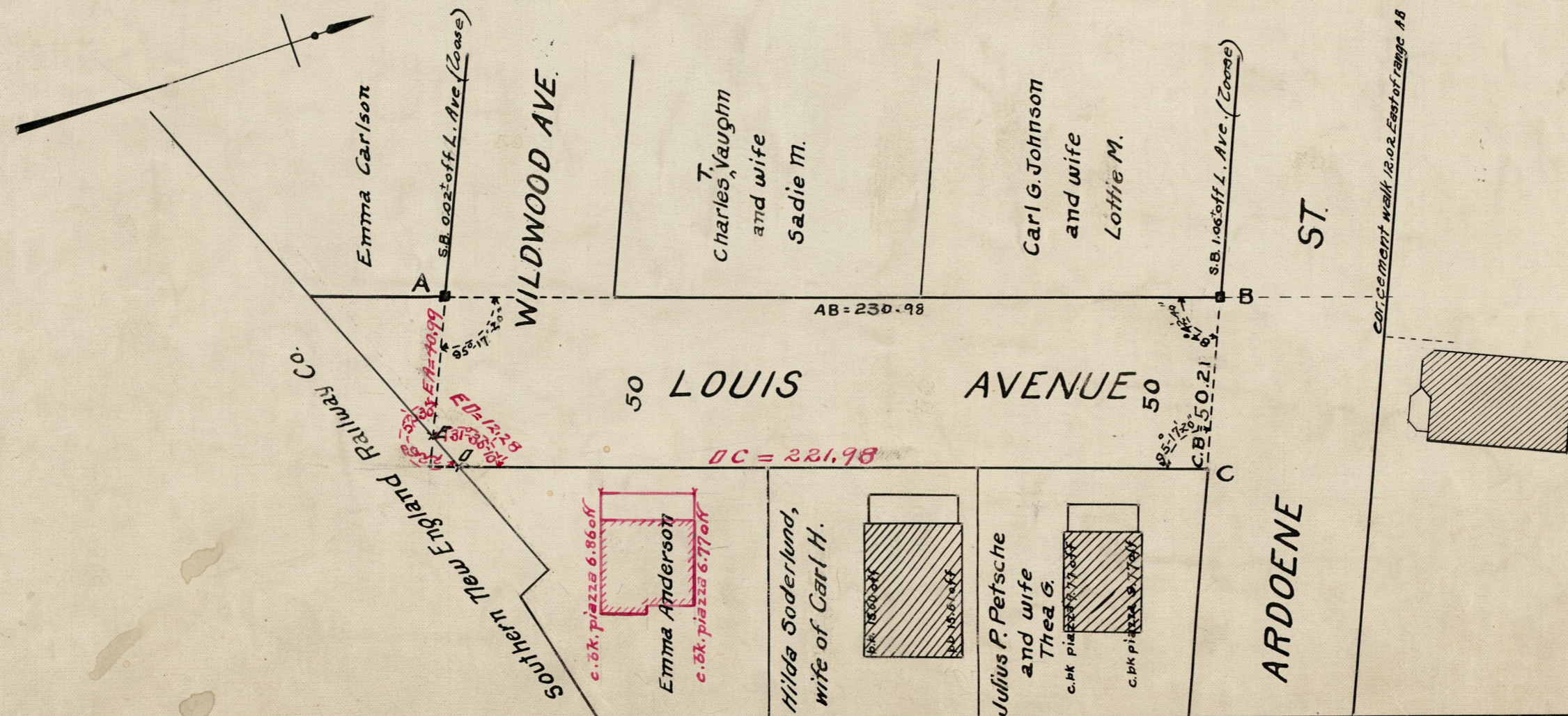
The lines thus fixed conform to the deeds in Deed Book 540 page 321, Deed Book 544 page 277

and to the Replat of the Nancy Waterman Land on Card 917 in the office of Recorder of Deeds.

PLAT OF  
**LOUIS AVENUE**  
FROM THE SOUTH SIDE OF WILDWOOD AVE TO ARDOENE ST.  
SCALE 40 FEET PER INCH  
DECLARED A PUBLIC HIGHWAY BY RESOLUTION  
OF THE BOARD OF ALDERMEN  
July 12-1923.

231.01

Witness, \_\_\_\_\_  
City Clerk.



OFFICE No. 22530  
DRAWER # 81  
SHEET # J-41