

PLAT OF MONTGOMERY AVENUE

FROM ROGER WILLIAMS PARK TO GYR ST.

SCALE 40 FEET PER INCH

DECLARED A PUBLIC HIGHWAY BY RESOLUTION
OF THE BOARD OF ALDERMEN

April 5, 1923

300.84
282.46
2) 583.30
291.65

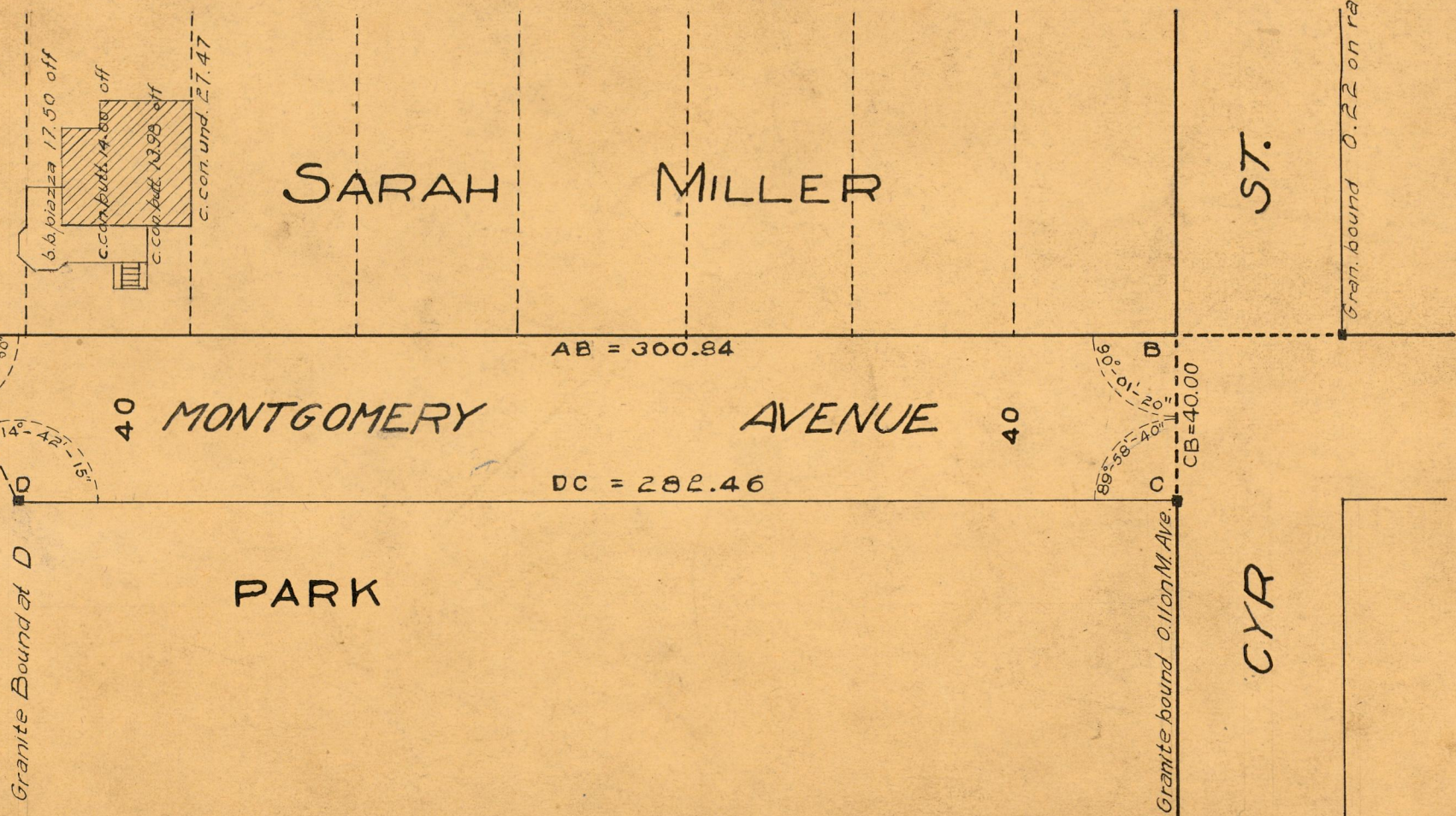
Witness, _____
City Clerk

Note: The area declared a public highway is indicated by the letters ABCD.

The lines thus fixed conform to the deed in Deed Book 610 page 281, and to the "John W. Babcock Plat, No. 1" recorded on Card 518 in the office of the recorder of Deeds.

ROGER

WILLIAMS



OFFICE No. _____
DRAWER „ 81
SHEET „ J-40