

PROVIDENCE, R.I.
CITY ENGINEER'S OFFICE
STREET LINE DEPT.
JAN. 19, 1922
045443

PLAT OF
EARLY STREET

AS PLATTED

FROM

NIAGARA ST. TO BROAD ST.

IN TWO SHEETS

SCALE 50 FEET PER INCH

Declared and Established a Public Highway

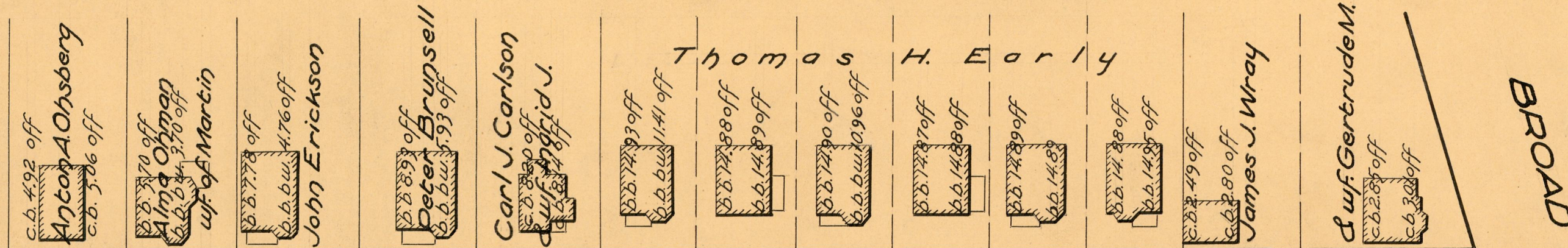
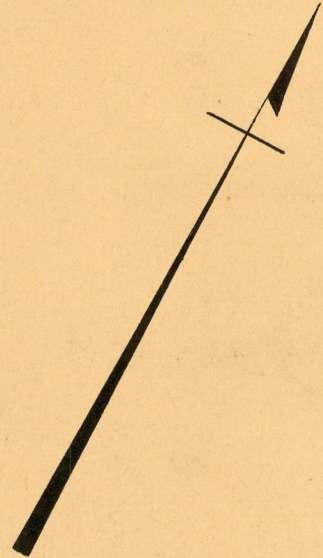
by Resolution of the

Board of Alderman

January 19, 1922

Witness
City Clerk

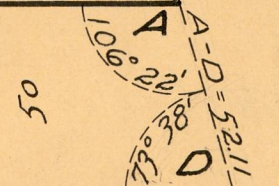
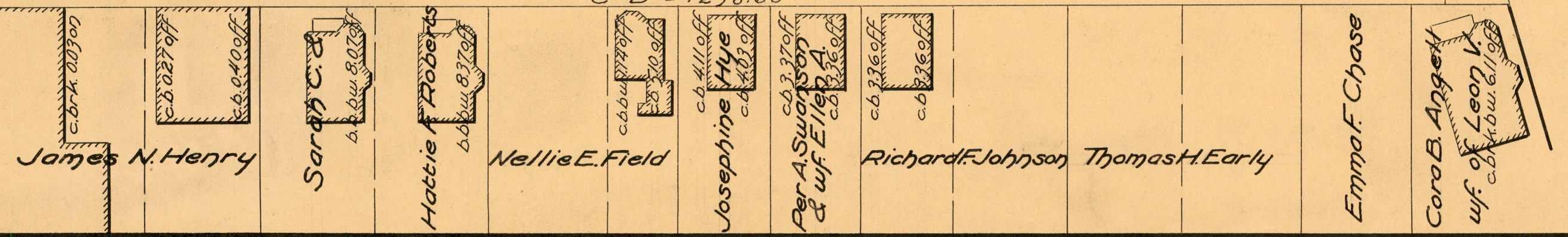
See note on sheet one.



B-A = 1237.02

EARLY STREET

C-D = 1238.60



BROAD

ST.

OFFICE No.	22270
DRAWER	81
SHEET	J-4