

For Note See Sheet 1.

PLAT OF  
**SHARON STREET**  
FROM SMITH ST. TO PLEASANT VALLEY PARKWAY  
IN THREE SHEETS

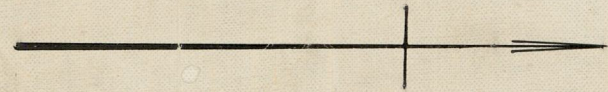
SCALE 50 FEET PER INCH  
ESTABLISHED AND DECLARED  
A PUBLIC HIGHWAY BY RESOLUTION  
OF THE BOARD OF ALDERMEN  
August 2, 1923.

PROVIDENCE, R.I.  
CITY ENGINEER'S OFFICE  
STREET LINE DEPT.

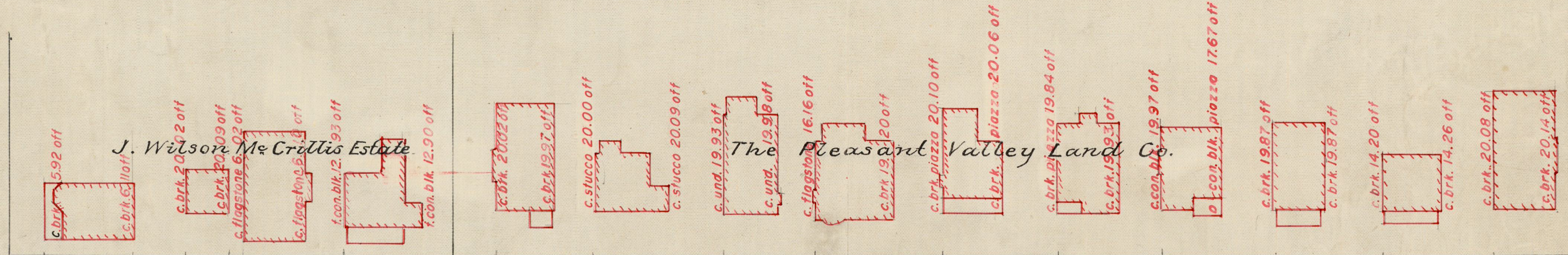
Oct. 11, 1923

046543

Witness, \_\_\_\_\_  
City Clerk.



PLEASANT VALLEY PARKWAY



AVE

SHARON

STREET

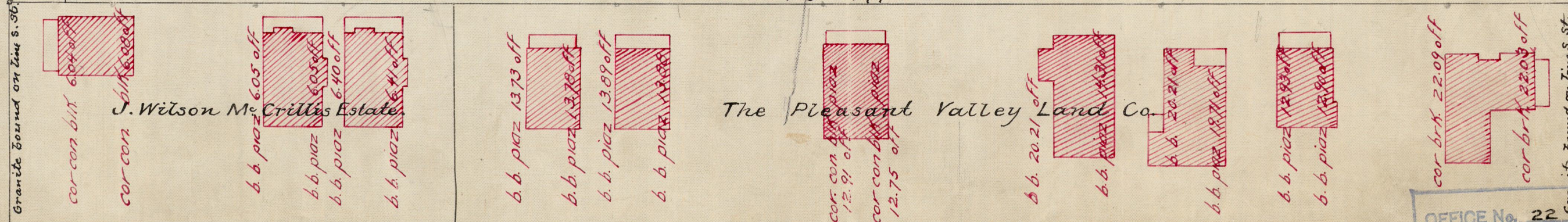
ED = 1793.52

FG = 1790.62

Granite bound on line S. 30' FE = 10.00 m  
90' 10' 50'

50

50



MOORLAND

OFFICE No. 22 577  
DRAWER 81  
SHEET J-39