

For Note See Sheet 1

PLAT OF SHARON STREET

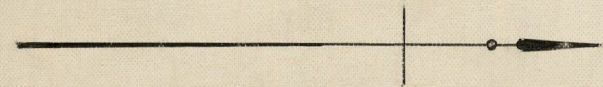
FROM SMITH ST. TO PLEASANT VALLEY PARKWAY
IN THREE SHEETS
SCALE 50 FEET PER INCH
ESTABLISHED AND DECLARED
A PUBLIC HIGHWAY BY RESOLUTION
OF THE BOARD OF ALDERMEN
August 2, 1923

PROVIDENCE, R.I.
CITY ENGINEER'S OFFICE
STREET LINE DEPT.

Oct. 11, 1923.

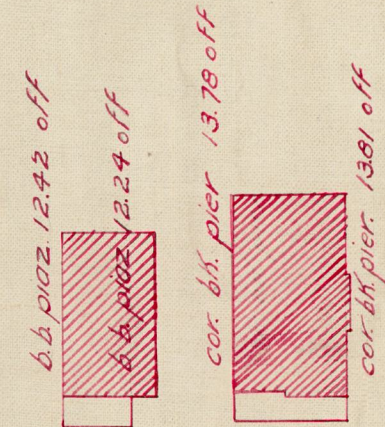
046542

Witness, _____
City Clerk.



AVE

The Pleasant Valley Land Company



AVE

*Charles R. Conway
and wife Mary V.
c.s. 17.82 off*

ED = 1793.52

SHARON

STREET

50

50

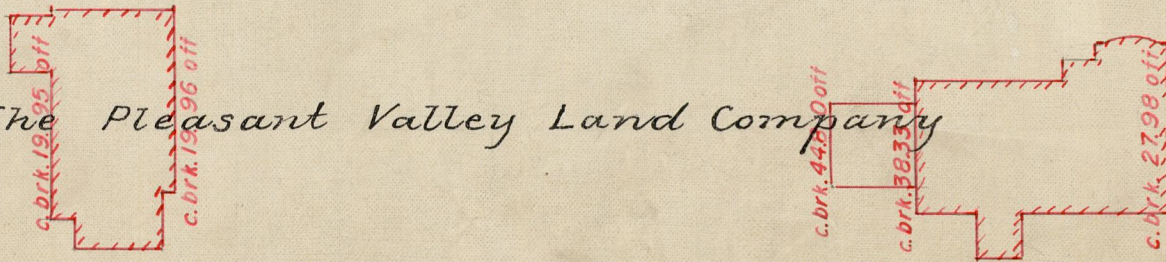
FG = 1790.62

Granite bound on line S. 56

MOORLAND



The Pleasant Valley Land Company



Granite bound on line S. 56

WHITFORD



OFFICE No. 22576

DRAWER " 81

SHEET " J-38