

T.F.C. 2352-13-1011

Note: The area established and declared a public highway is indicated by the letters ABCDEFGH. The lines thus fixed conform to the deeds recorded in Deed Book 536, page 314 and Deed Book 565 page 210 and to "Elm Farm Plat" recorded on card 736, the "Hazard Homestead Plat" recorded on card 978 and the "Fairlawn Plat" recorded on card 587 in the office of the Recorder of Deeds

The area indicated by the letters CBJK was deeded (see D.B. 656, pages 283 & 284) and declared a public highway by resolution of the Board of Aldermen, November 20, 1924. The area indicated by the letters JKIA was condemned for a public highway by resolution of the City Council October 15, 1924.

PLAT OF SHARON STREET

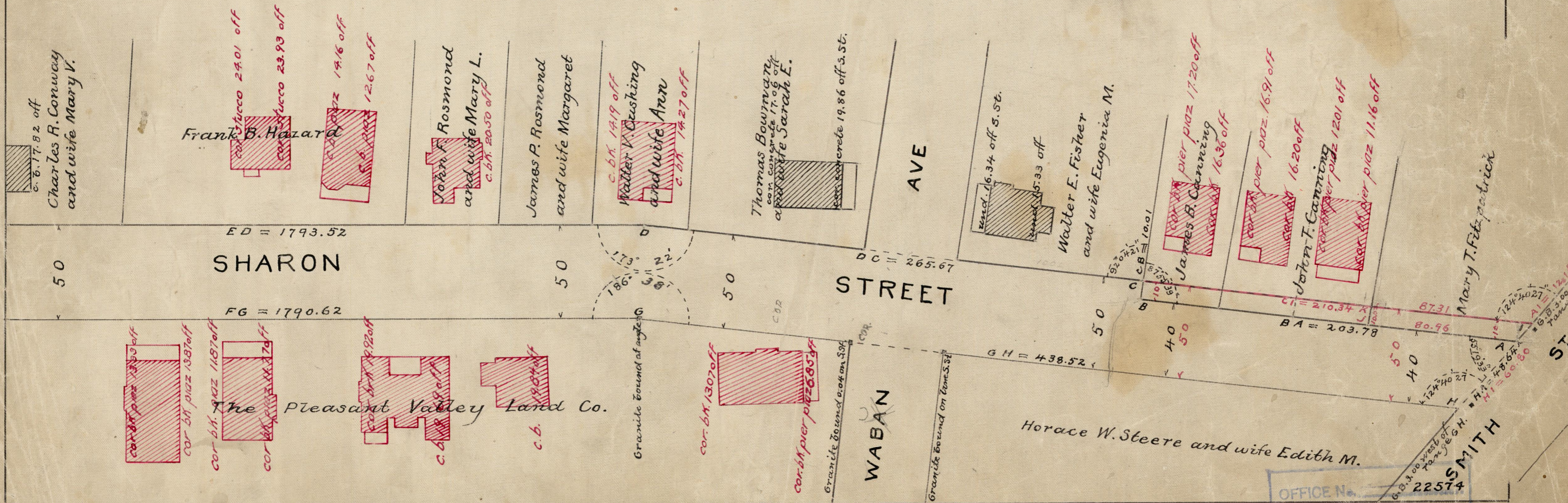
FROM SMITH ST. TO PLEASANT VALLEY PARKWAY

IN THREE SHEETS
SCALE 50 FEET PER INCH
ESTABLISHED AND DECLARED
A PUBLIC HIGHWAY BY RESOLUTION
OF THE BOARD OF ALDERMEN

August 2, 1923.

203.78	1790.62
265.67	438.52
1793.52	2229.17
2262.97	2262.97
2) 4492.11	
2246.055	

Witness _____
City Clerk



OFFICE No. 22574
DRAWER # 81
SHEET # J-37