

GAN 2325-178-179-180  
GAN 2346-5

*Note: The area established and declared a public highway is indicated by the letters ABCDEFGHIJ. The lines thus fixed conform to the "Field Farm Plat No. 4" recorded on Card 1061 and to the "William Thurber Plat" recorded on Card 259, in the office of the Recorder of Deeds.*

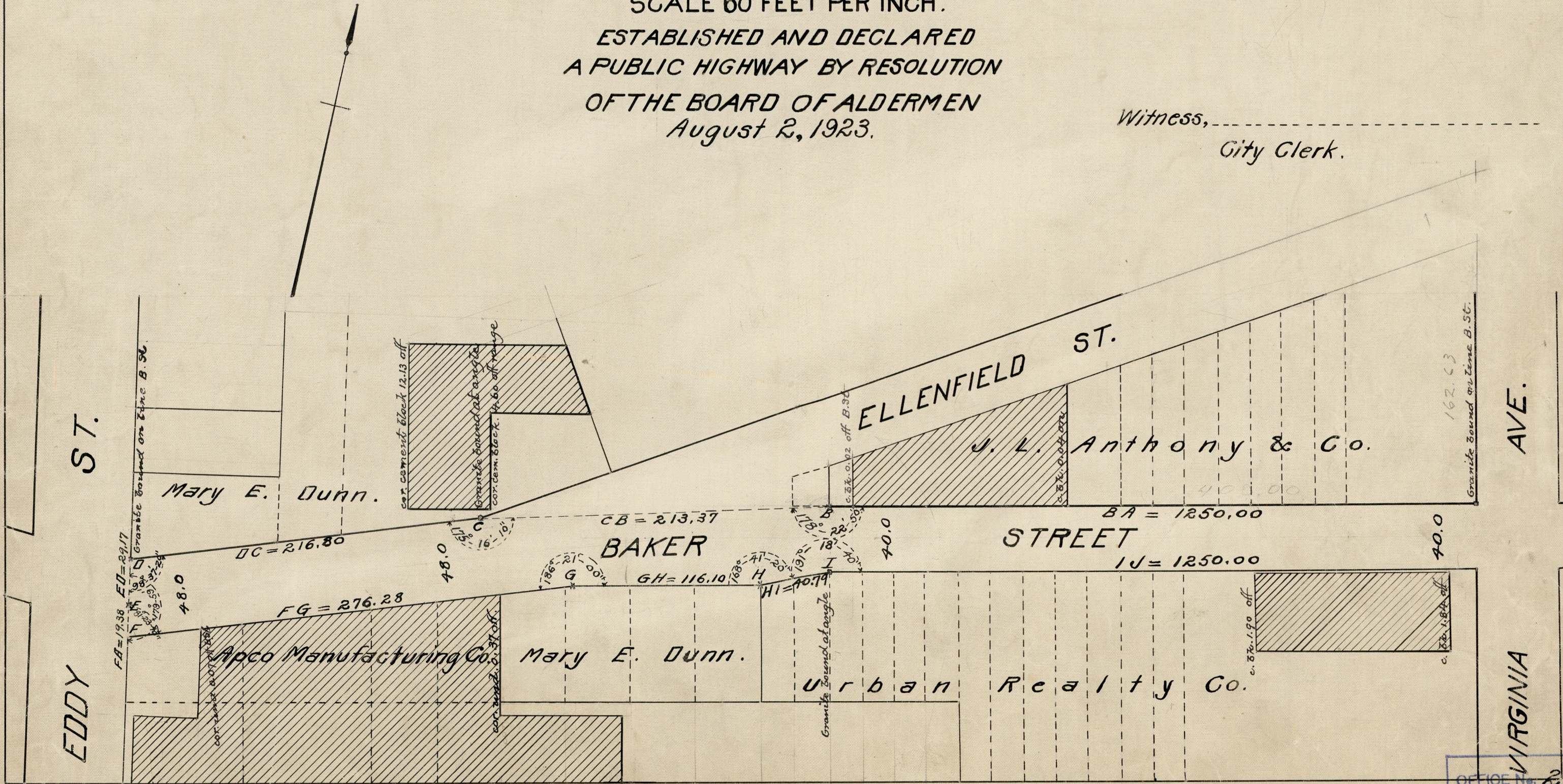
# PLAT OF BAKER STREET

FROM ALLENS AVE. TO EDDY ST.  
IN TWO SHEETS  
SCALE 60 FEET PER INCH.

ESTABLISHED AND DECLARED  
A PUBLIC HIGHWAY BY RESOLUTION  
OF THE BOARD OF ALDERMEN  
August 2, 1923.

PROVIDENCE, R.I.  
CITY ENGINEER'S OFFICE  
STREET LINE DEPT.  
Sep't. 7, 1923.  
046462

Witness, \_\_\_\_\_  
City Clerk.



OFFICE No. 22566  
DRAWER " 81  
SHEET " J-32