

Note: The area established and declared a public highway is indicated by the letters ABCDEFGHIJ. The lines thus fixed conform to the "Field Farm Plat No. 4" recorded on Card 1061 and to the "William Thurber Plat" recorded on Card 259, in the office of the Recorder of Deeds.

PLAT OF BAKER STREET

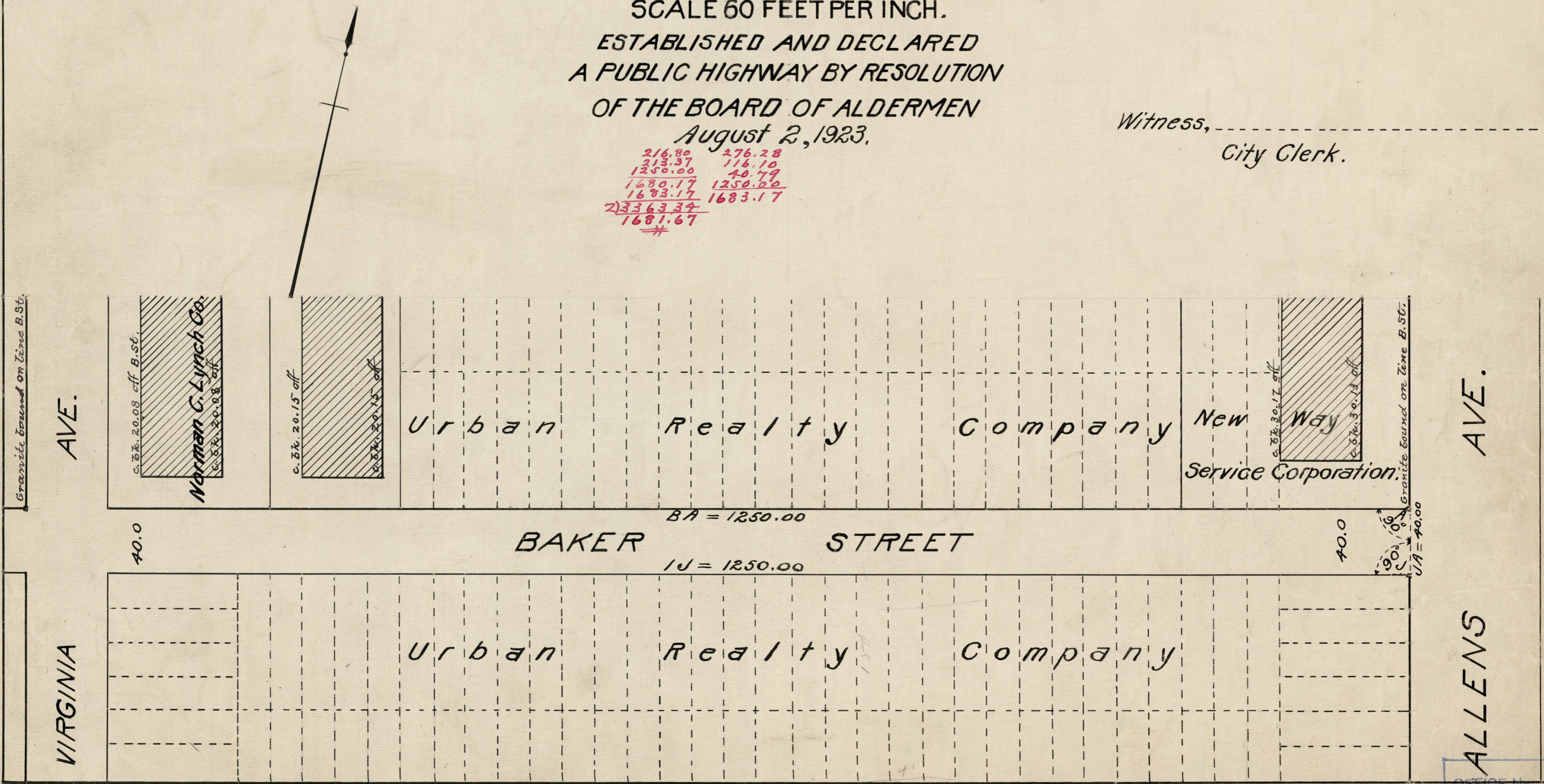
FROM ALLENS AVE. TO EDDY ST.
IN TWO SHEETS
SCALE 60 FEET PER INCH.

ESTABLISHED AND DECLARED
A PUBLIC HIGHWAY BY RESOLUTION
OF THE BOARD OF ALDERMEN
August 2, 1923.

216.80	276.28
213.37	116.10
1250.00	40.79
1680.17	1250.00
1683.17	1683.17
<u>23363.34</u>	
1681.67	
#	

Witness, _____
City Clerk.

PROVIDENCE, R.I.
CITY ENGINEER'S OFFICE
STREET LINE DEPT.
Sept. 7, 1923
046461



OFFICE No. 22565
DRAWER, 81
SHEET, J-31