

PROVIDENCE, R.I.  
CITY ENGINEER'S OFFICE  
STREET LINE DEPT.

Sept. 4, 1923.

046457

Note: The area established and declared a public highway is indicated by the letters ABCD.

The lines thus fixed conform to the deed in Deed Book 410 page 142 and to the plat of "Joseph Burgess Estate" recorded on Card 235 in the office of the Recorder of Deeds.

# PLAT OF SEARLE STREET

FROM SAYLES ST. TO OXFORD ST.

SCALE 40 FEET PER INCH

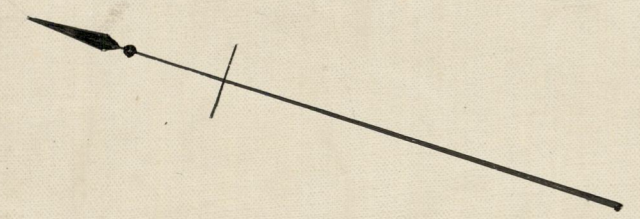
ESTABLISHED AND DECLARED  
A PUBLIC HIGHWAY BY RESOLUTION  
OF THE BOARD OF ALDERMEN

September 6, 1923.

320.46

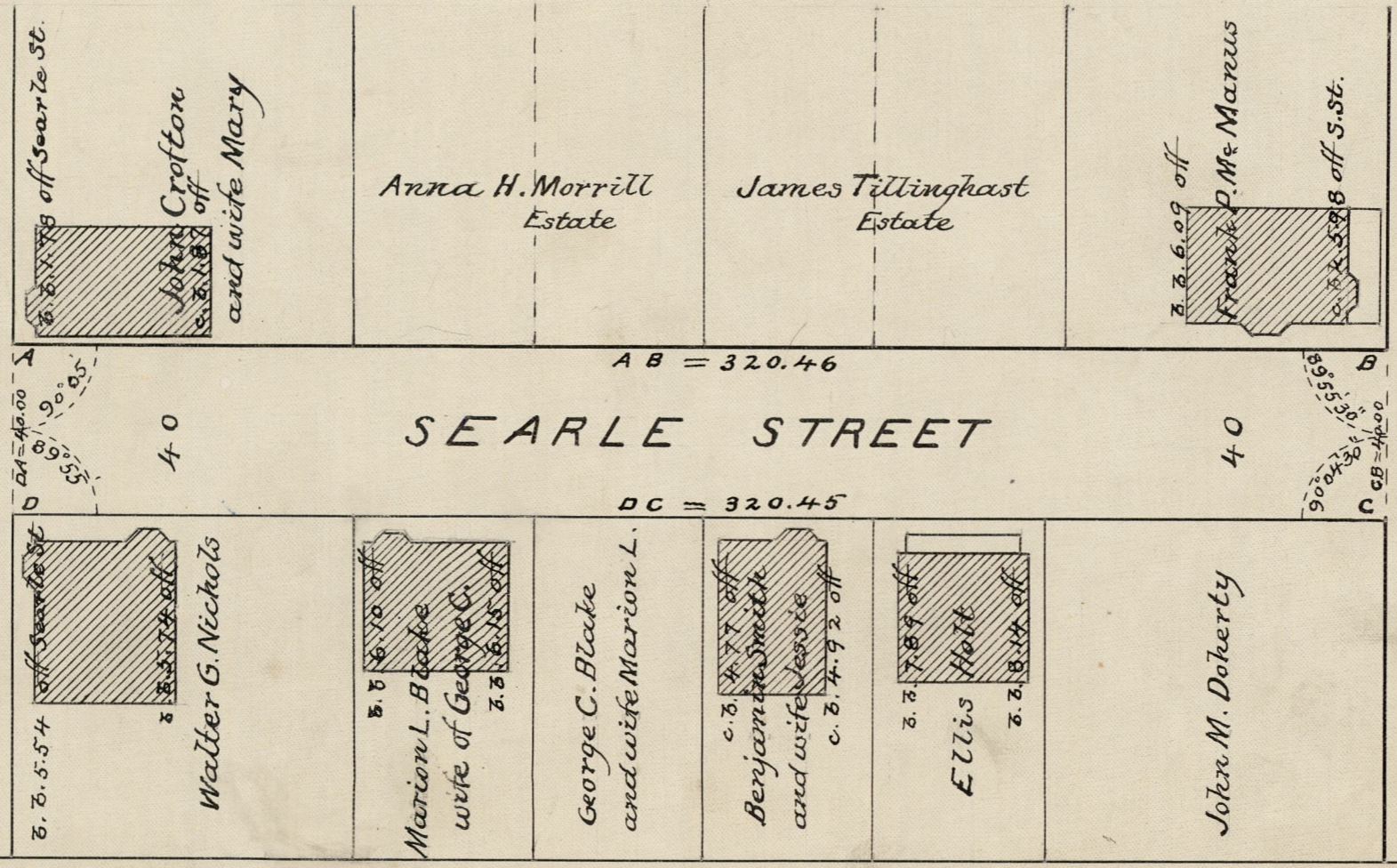
Witness, .....

City Clerk.



SAYLES ST.

SAYLES



ST.

OXFORD

OFFICE No.	22559
DRAWN	81
SHEET	J-30