

CAN 2346-12

PROVIDENCE, R.I.
CITY ENGINEER'S OFFICE
STREET LINE DEPT.

Aug. 2, 1923

046406

PLAT OF DRYDEN LANE

FROM BRANCH AVE. TO PRINTERY ST.
SCALE 40 FEET PER INCH.

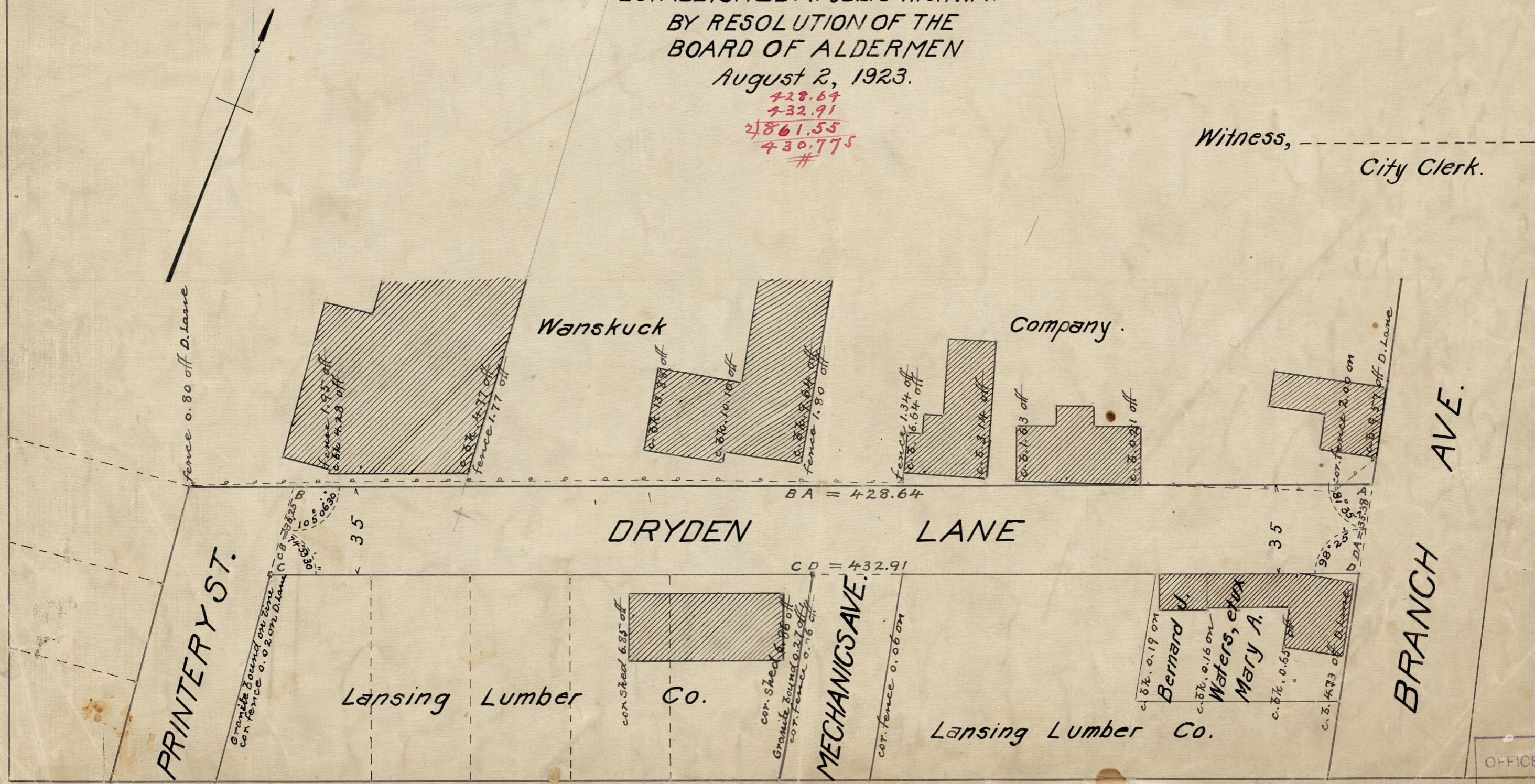
ESTABLISHED A PUBLIC HIGHWAY
BY RESOLUTION OF THE
BOARD OF ALDERMEN
August 2, 1923.

228.64
+ 32.91

261.55
+ 30.775

292.325

Witness, _____
City Clerk.



OFFICE No.	22557
DRAWER	81
SHEET	J-27