

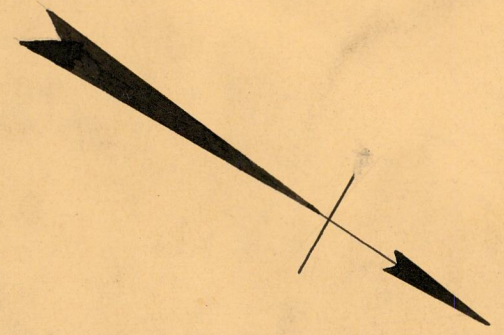
Note. The area declared a public highway is indicated by the letters ABCDEFGH.

The lines thus fixed conform to the deed recorded in Deed Book 427 page 338, also to the John R. Freeman Plat No 2nd recorded as Plat Card 1048 in the office of the Recorder of Deeds.

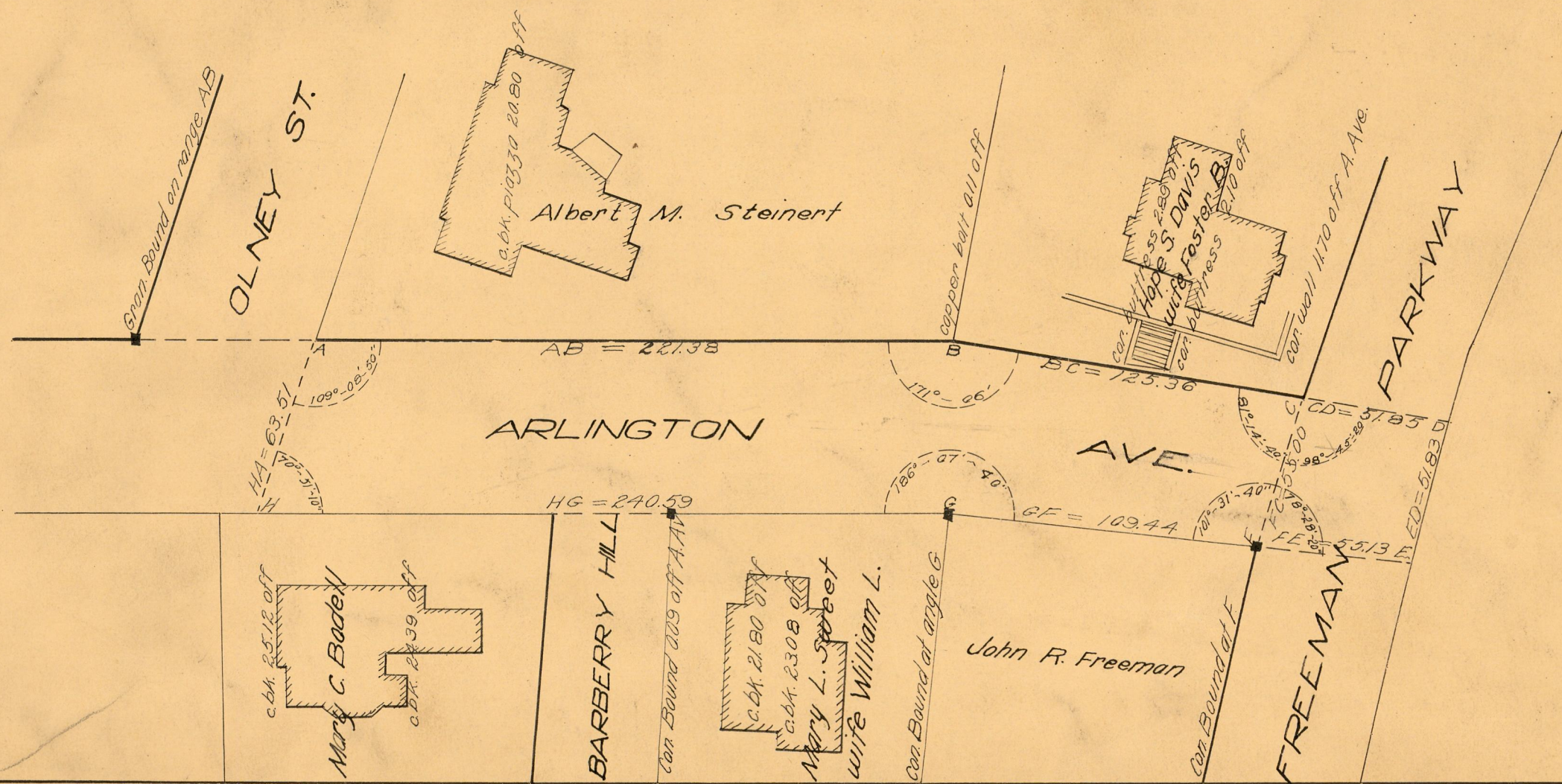
PLAT OF
ARLINGTON AVENUE
 FROM OLNEY ST. TO THE NORTHERLY LINE OF
 FREEMAN PARKWAY

SCALE 50 FEET PER INCH
 DECLARED A PUBLIC HIGHWAY BY RESOLUTION
 OF THE BOARD OF ALDERMEN
 OCTOBER 5, 1922.

PROVIDENCE, R.I.
 CITY ENGINEER'S OFFICE
 STREET LINE DEPT.
 Jan 17, 1935
 056182



Witness --- City Clerk ---



OFFICE No. 22504
 DRAWER 81
 SHEET J-23