

SHEET TWO

For note see sheet 1

PROVIDENCE, R.I.
CITY ENGINEER'S OFFICE
STREET LINE DEPT.

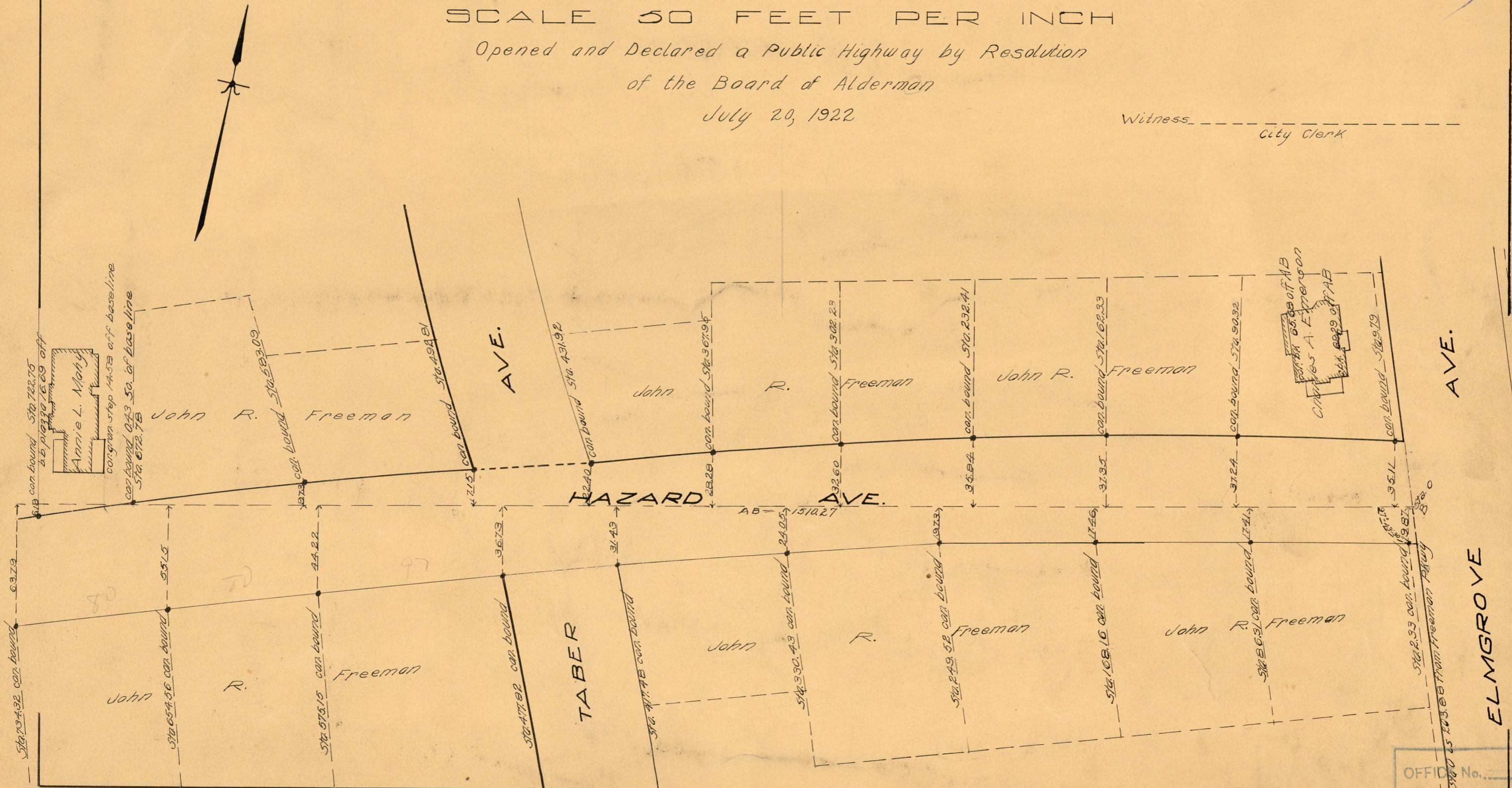
Dec. 22, 1922

056176

PLAT OF
HAZARD AVENUE
FROM MORRIS AVE. TO ELMGROVE AVE.
IN TWO SHEETS
SCALE 50 FEET PER INCH

Opened and Declared a Public Highway by Resolution
of the Board of Alderman
July 20, 1922

Witness _____
City Clerk



| | |
|------------|-------|
| OFFICE No. | 22502 |
| DRAWER | 81 |
| SHEET | J-22 |