

SHEET ONE

PROVIDENCE, R.I.  
CITY ENGINEER'S OFFICE  
STREET LINE DEPT.

Dec. 22, 1922

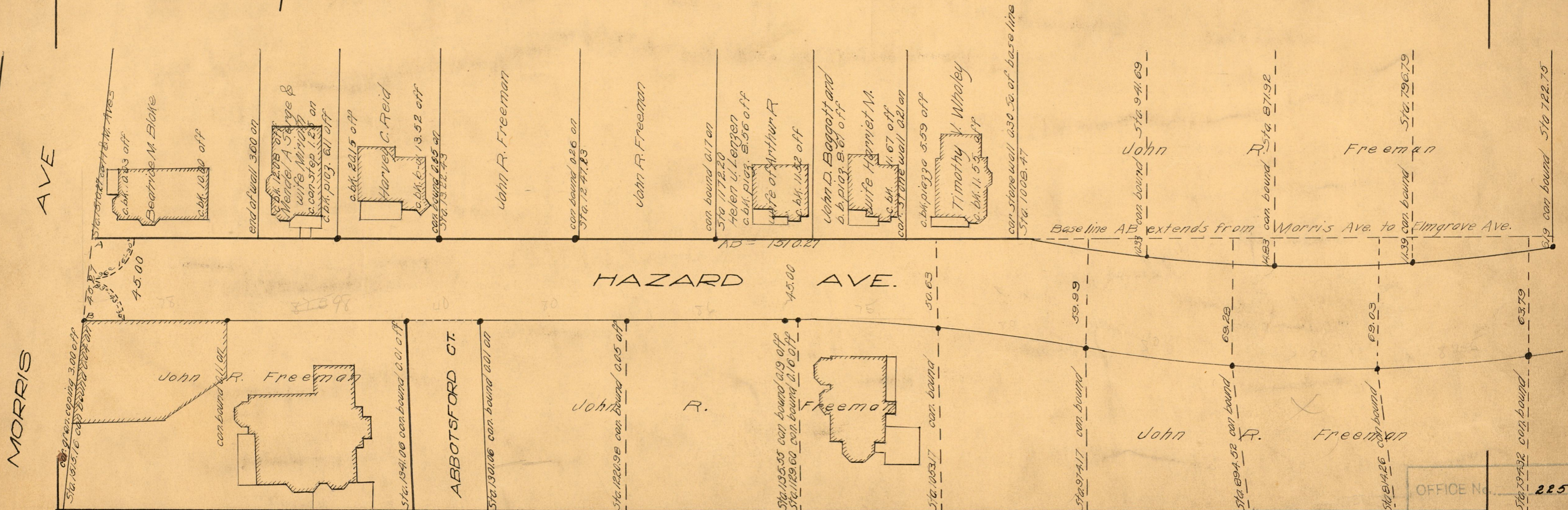
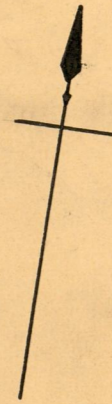
056175

PLAT OF  
**HAZARD AVENUE**  
FROM MORRIS AVE TO ELMGROVE AVE  
IN TWO SHEETS  
SCALE 50 FEET PER INCH

Opened and Declared a Public Highway by Resolution  
of the Board of Aldermen  
July 20, 1922

Witness ----- City Clerk

Note: The lines of Hazard Avenue shown on this plat are intended to agree with the deeds recorded in Deed Book 610, pages 361, 302 & 363, Deed Book 431, page 30, Deed Book 562, page 404, also with John R. Freeman Plat No. 1 recorded on plat card 1036 in the office of the Recorder of Deeds.  
The bounds specified on the Freeman Plat as land marks have been located by stations on, and offsets measured at right angles to base line AB.



OFFICE No. 22502  
DRAWER " 81  
SHEET " J-21