

T.F.C. = 2303-54

PROVIDENCE, R.I.  
CITY ENGINEER'S OFFICE  
STREET LINE DEPT.

Dec. 30, 1922

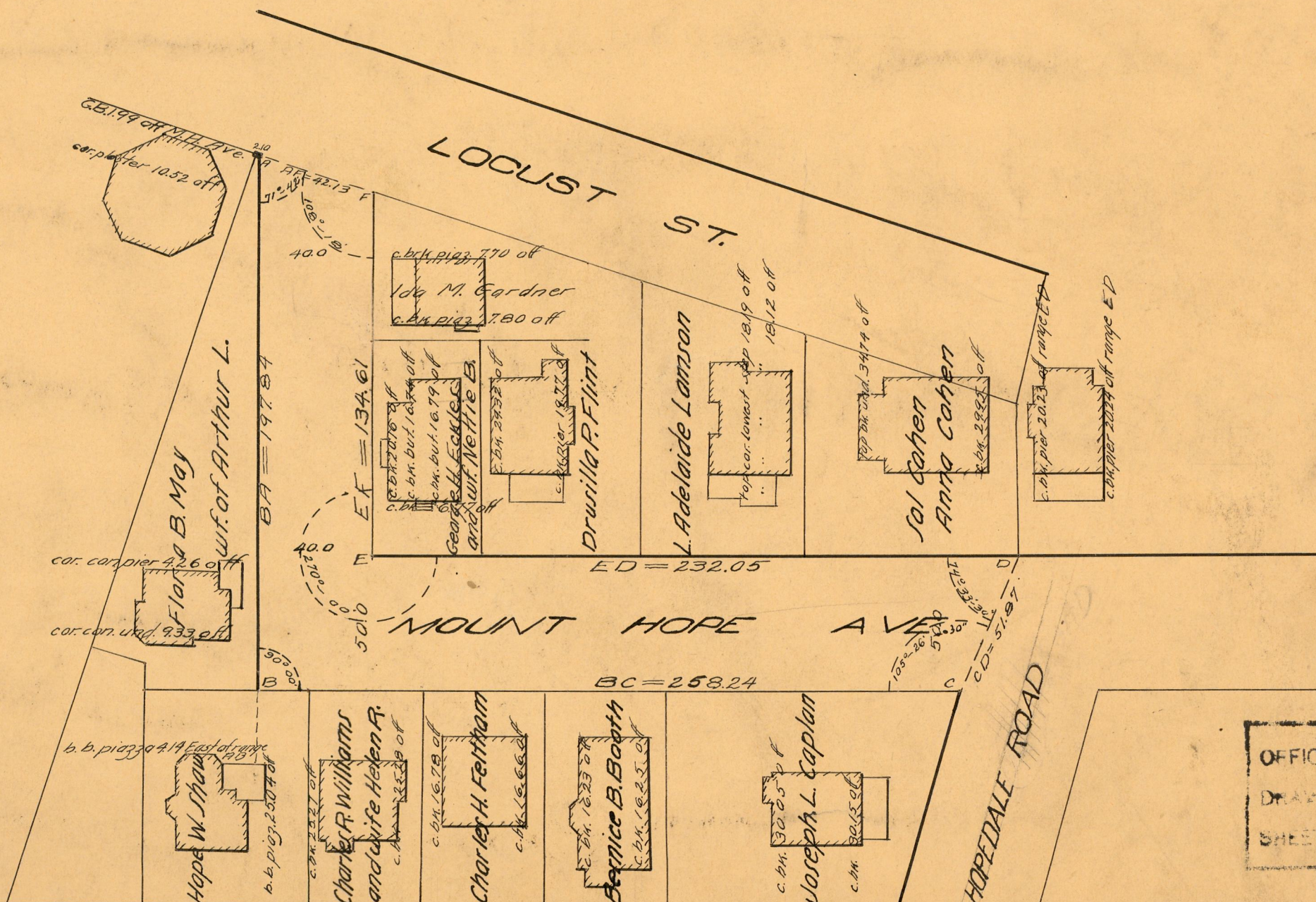
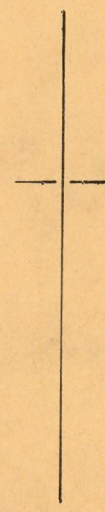
046100

PLAT OF  
**MOUNT HOPE AVENUE**  
FROM LOCUST ST. TO HOPEDALE ROAD  
SCALE 50 FEET PER INCH  
DECLARED A PUBLIC HIGHWAY BY RESOLUTION  
OF THE BOARD OF ALDERMEN  
NOVEMBER 16, 1922.

Note. The area ordered to be opened  
and repaired is indicated by the  
letters ABCDEF.

The lines thus fixed agree with the  
"Mount Hope Plat, No. 2" recorded on plat  
card 1016 in the office of the Recorder of Deeds.

Witness \_\_\_\_\_  
City Clerk.



OFFICE No. 22501  
DRAWN BY 81  
SHEET 4-20