

NOTE, The area declared and established as a public highway is indicated by the letters ABCD.

The lines thus fixed agree with the deeds recorded in Deed book 488 page 285, Deed book 562 page 302, Deed book 565 page 95, Deed 577 page 82 and Deed book 607 pages 451-2-3 in the office of the Recorder of Deeds, and also with the plat entitled "Plat of House Lots in Cranston belonging to A.V. Dike" a copy of which can be found on plat card 229 in said Recorder's office

PLAT OF SIBLEY STREET

AS PLATTED

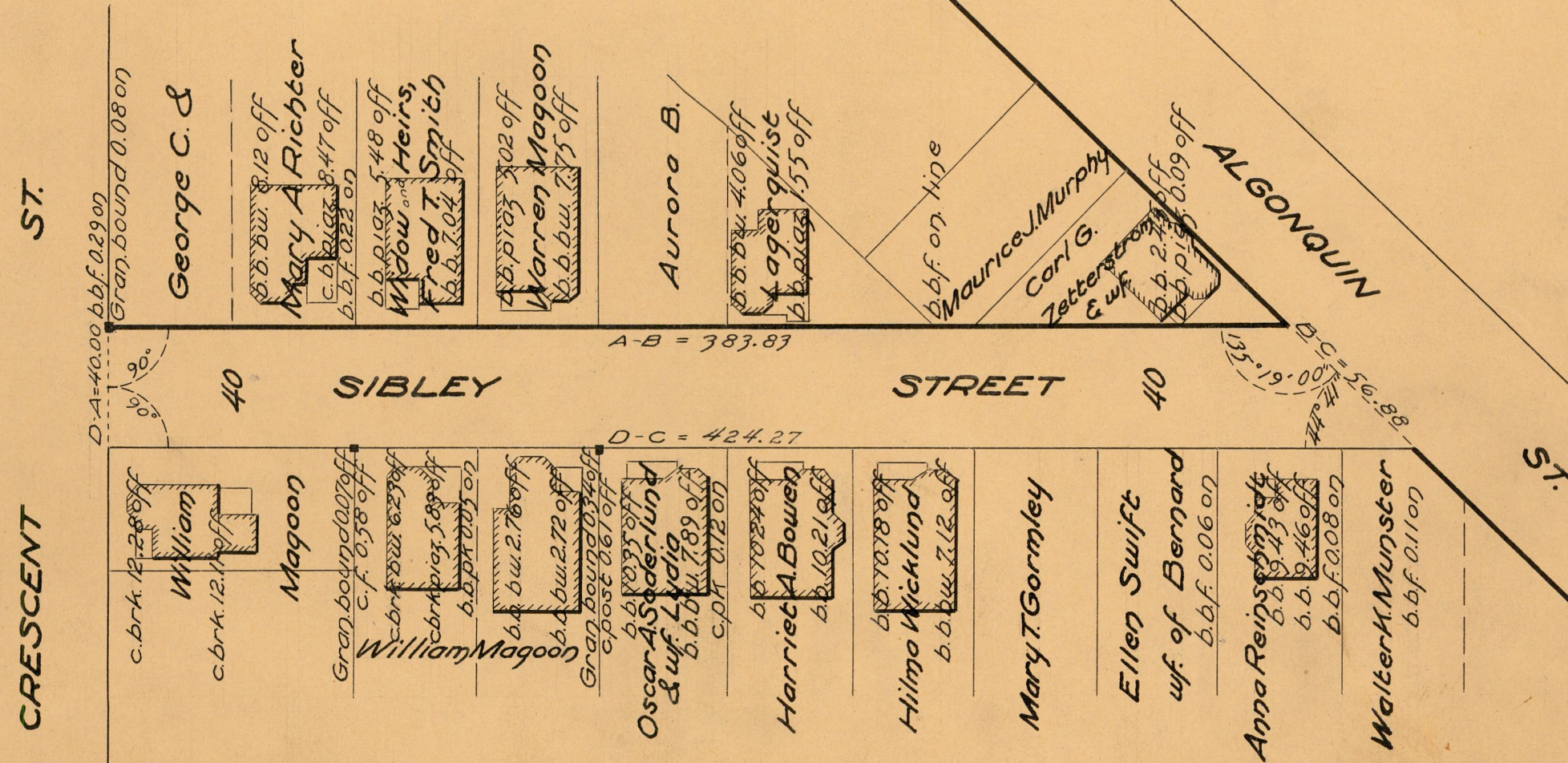
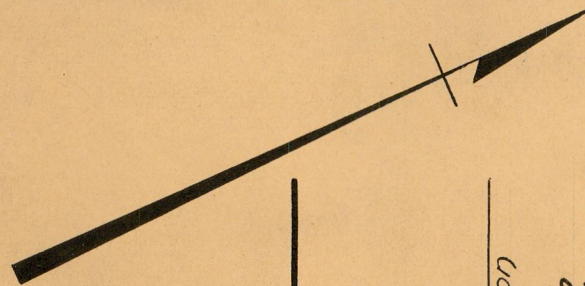
FROM

CRESCENT ST. TO ALGONQUIN ST.

SCALE 50 FEET PER INCH

Declared and Established a Public Highway by Resolution of the Board of Alderman January 19, 1922

Witness..... City Clerk



OFFICE No.	22267
DRAWER	81
SHEET	J-2