

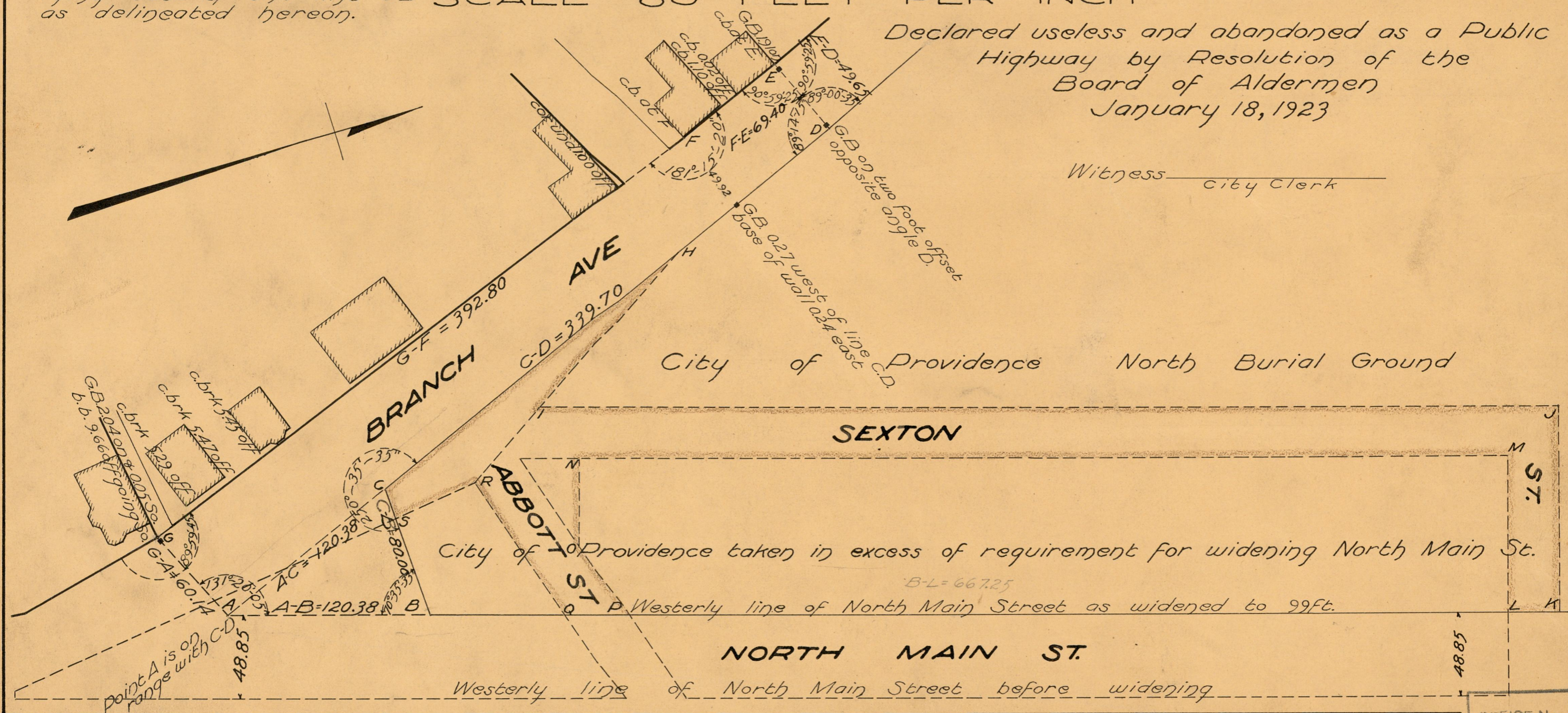
PROVIDENCE, R.I.
CITY ENGINEER'S OFFICE
STREET LINE DEPT.
JAN. 17, 1923
046114

NOTE, The location and boundaries of the parcels of land abandoned as public highways are indicated hereon by the letters C-H-I-J-K-L-M-N-O-P-Q R-S, and include the entire area of Sexton and Abbott Streets between North Main Street, as recently widened, and Branch Avenue, and the portion of Branch Avenue lying east of the line C-D as delineated hereon.

PLAT OF
SEXTON STREET
AND PORTIONS OF
ABBOTT STREET
AND
BRANCH AVENUE
SCALE 60 FEET PER INCH

Declared useless and abandoned as a Public Highway by Resolution of the Board of Aldermen January 18, 1923

Witness City Clerk



City of Providence North Burial Ground

SEXTON

City of Providence taken in excess of requirement for widening North Main St.

B-L = 667.25

Westerly line of North Main Street as widened to 99ft.

NORTH MAIN ST.

Westerly line of North Main Street before widening

OFFICE No. 22483
DRAWER 81
SHEET J-16