

PROVIDENCE, R.I.  
CITY ENGINEER'S OFFICE

STREET LINE DEPT.

SEPT. 18, 1922

045929

PLAT SHOWING WIDENING OF

# UNION AVENUE

NEAR THE SOUTHWESTERLY CORNER OF  
HUNTINGTON AVENUE

SCALE 40 FEET PER INCH

*Declared and Established as a Public Highway*

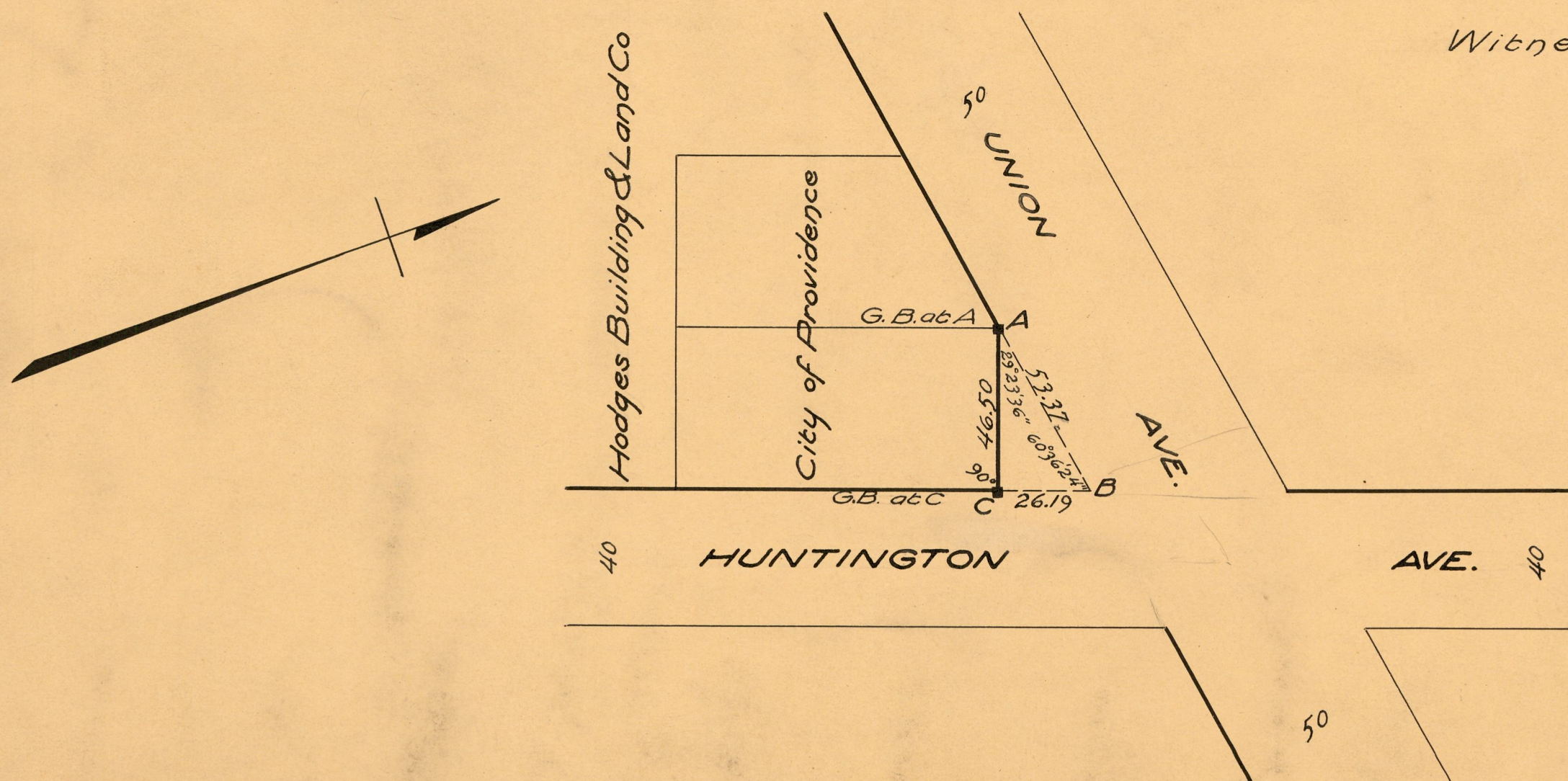
*by Resolution of the  
Board of Aldermen*

*October 5, 1922*

**NOTE:**

The area declared and established as a public highway is indicated by the letters ABC and contains 609 sq.ft.

Witness.....*City Clerk*



OFFICE No.	22058
DRAWN BY	81
SHEET	J-14