

PROVIDENCE, R.I.  
CITY ENGINEER'S OFFICE  
STREET LINE DEPT.  
July 24, 1931  
053886

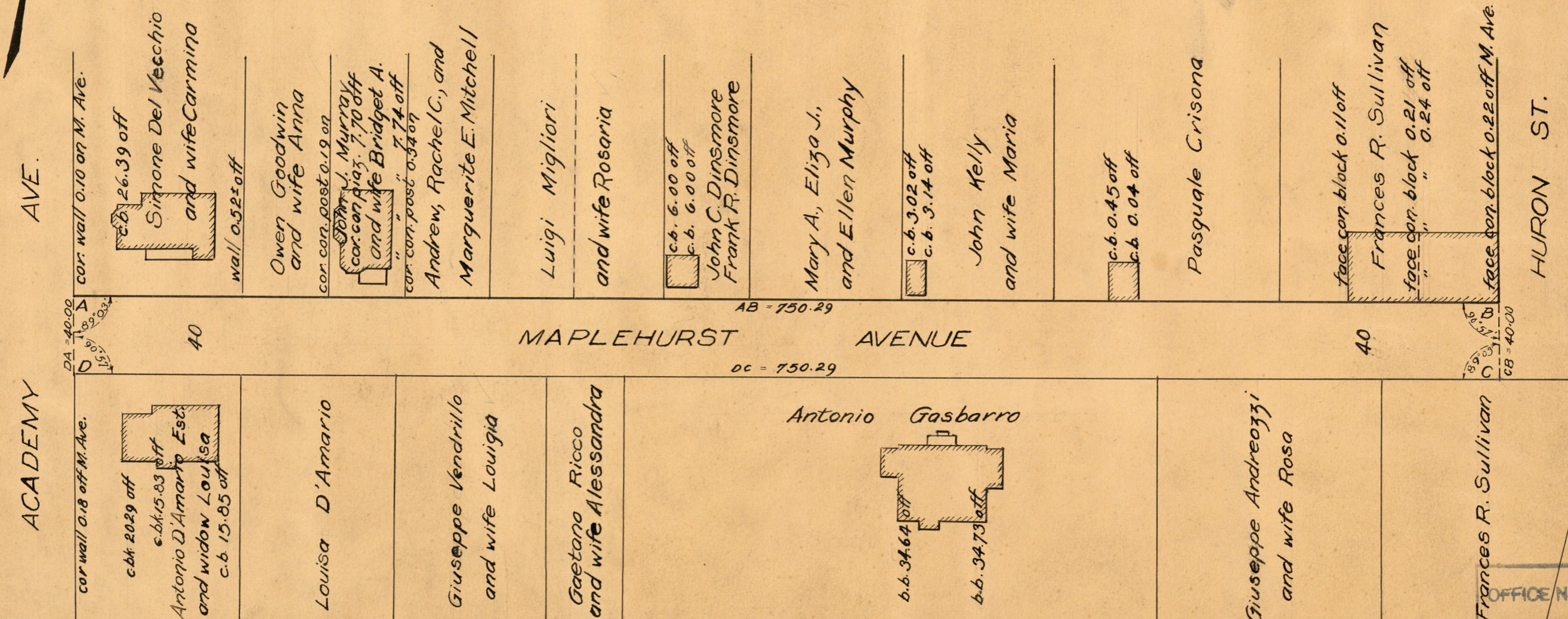
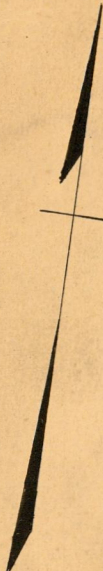
# PLAT OF MAPLEHURST AVENUE

FROM ACADEMY AVE. TO HURON ST.

BOARD OF ALDERMEN

MAY 7, 1925

Scale 60' = 1"



ACADEMY AVE.

ACADEMY AVE.

HURON ST.

MAPLEHURST AVENUE

OFFICE No. 23060  
DRAWER 81  
SHEET J-100