

PROVIDENCE, R.I.  
CITY ENGINEER'S OFFICE  
STREET LINE DEPT.

JAN. 19, 1922

045498

# PLAT OF SEABURY STREET

AS PLATTED

FROM

POTTERS AVE. TO HUNTINGTON AVE.

SCALE 50 FEET PER INCH

Declared and Established a Public Highway

by Resolution of the

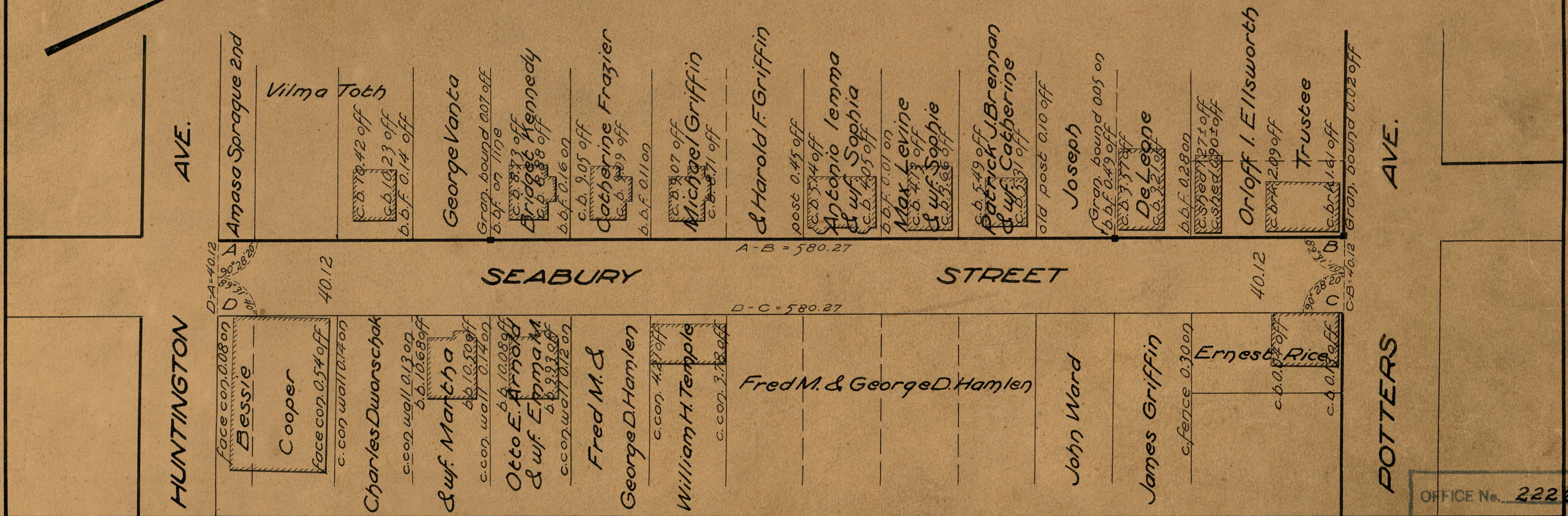
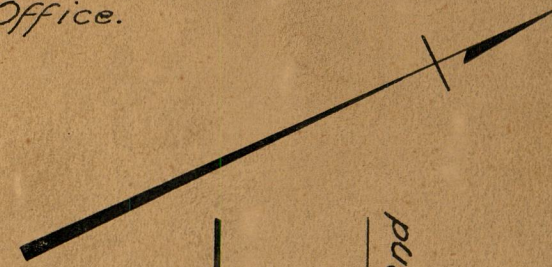
Board of Aldermen

January 19, 1922

Witness.....  
City Clerk

NOTE, The area declared and established as a public highway is indicated by the letters ABCD.

The lines thus fixed agree with the deeds recorded in Deed book 383, page 78, Deed book 420, page 58, and Deed book 561, pages 364-5, 372, 387, 414, 422 and 483, Deed book 565 pages 150-1 and 156, Deed book 607, pages 407, 409 413-4 and 455, and Deed book 610 pages 194 and 243, in the office of the Recorder of Deeds, and also with the plat entitled Plat No. 4 of house lots in Cranston belonging to Geo. W. Crocker, a copy of which can be found on plat card 238 in said Recorder's Office.



OFFICE No. 22266  
 DRAWER # 81  
 SHEET # J-1