

PROVIDENCE, R. I.
CITY ENGINEER'S OFFICE.
STREET LINE DEPT.

Oct 23-1884

010428

Providence R. I.
This plat accompanies
our report of this date

PLAT OF CUSHING STREET

FROM PROSPECT ST. TO BROOK ST.

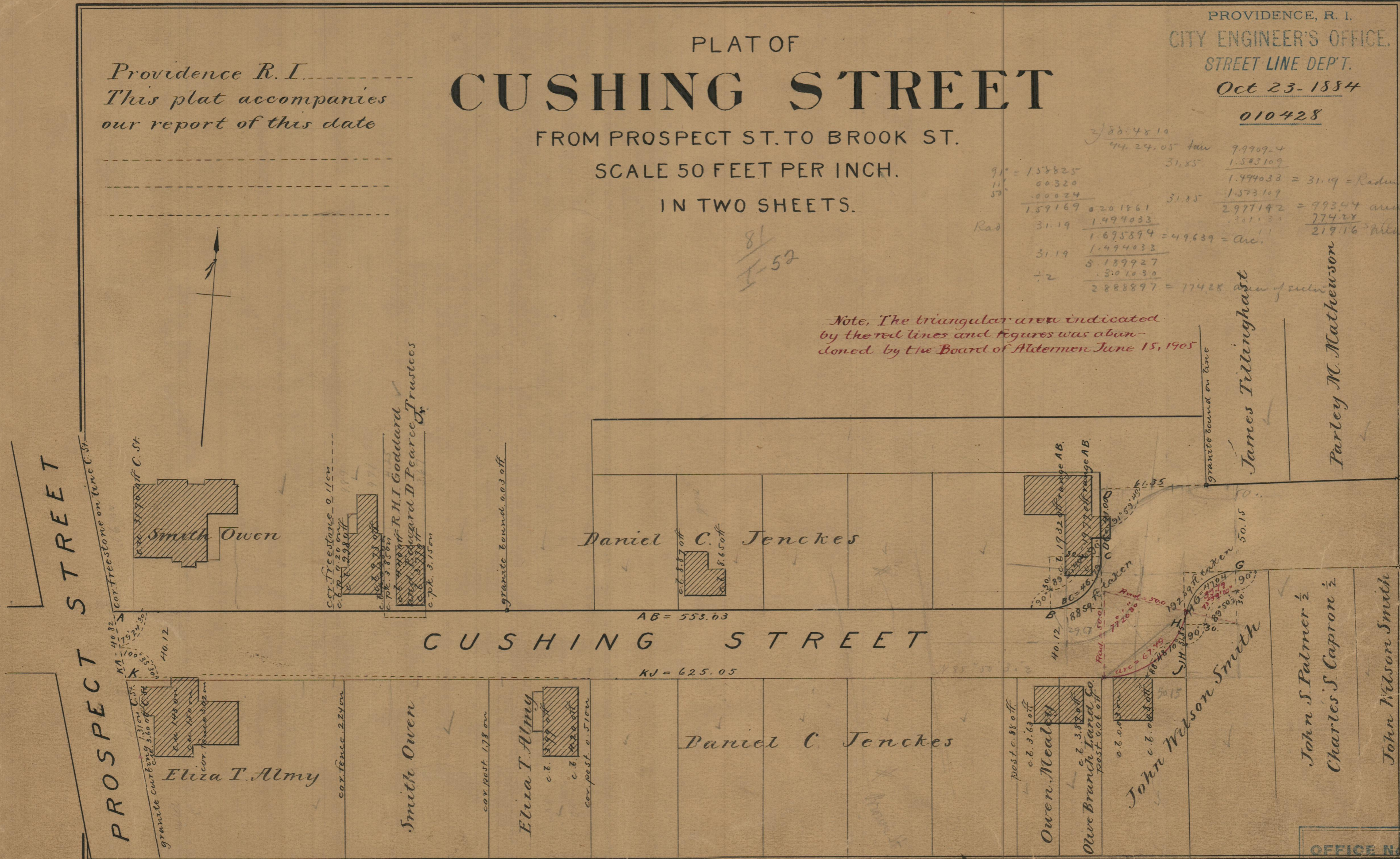
SCALE 50 FEET PER INCH.

IN TWO SHEETS.

97°	= 158825	31.85	1.583109	9.9909-4
111°	00320			1.494033 = 31.19 = Radius
59°	00024	31.85	1.573109	
	159169	0.201861		2977142 = 993.44 area double triangle
		1.494033		774.28
Rad	31.19	1.695894 = 49.639 = arc.		219.16 area abandoned
	31.19	1.494033		
		5.189927		
		310.1030		
		2888897 = 774.28 area of sector		

81
I-52

Note, The triangular area indicated by the red lines and figures was abandoned by the Board of Aldermen June 15, 1905



OFFICE No. 8155
DRAWER 81
SHEET I-52