

PROVIDENCE, R. I.
CITY ENGINEER'S OFFICE.
STREET LINE DEPT.

June 7, 1884

010010

Providence R. I.
This map accompanies
our report of this date.

MAP OF FENNER AVENUE

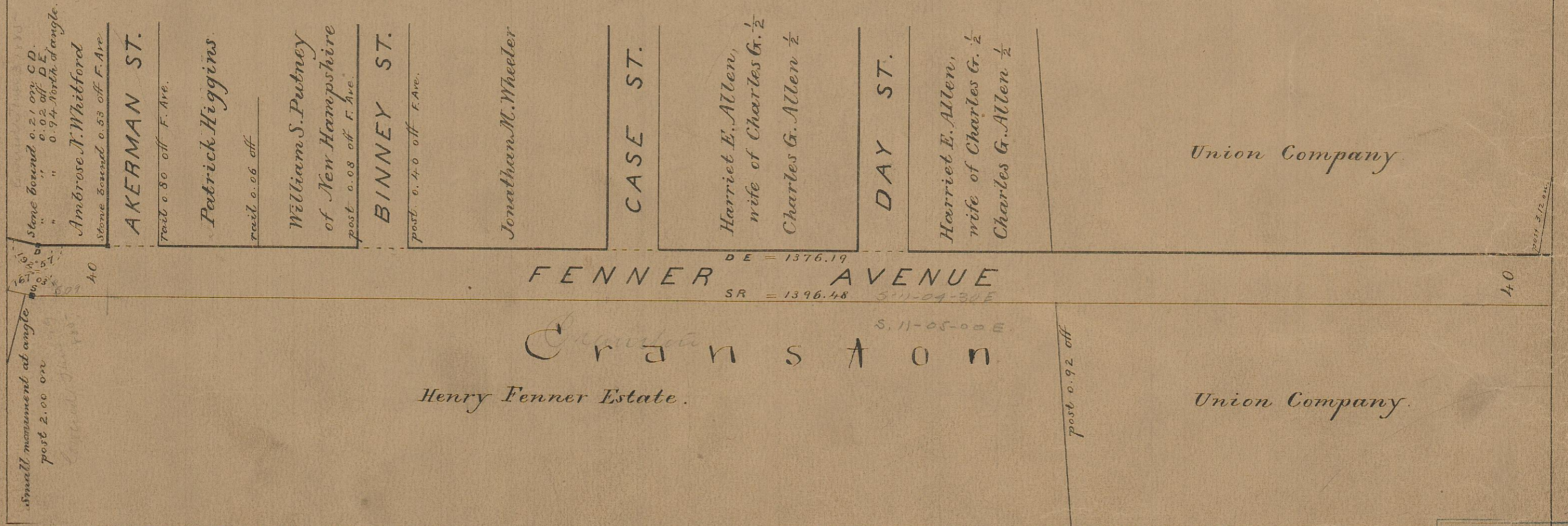
FROM CRANSTON ST. TO RESERVOIR AVE.

IN SIX SHEETS.

SCALE 80 FEET PER INCH.

81
I-27

Changed to Niantic Ave. Jan. 18, 1900.
Part of State Highway System.
See R. I. Acts and Resolves No. 44. (H 569)
Approved Feb. 26, 1936.



OFFICE No. 8030
DRAWER " 81
SHEET I-27

81
I-27