

PROVIDENCE, R. I.
CITY ENGINEER'S OFFICE.
STREET LINE DEPT.

June 7, 1884

010009

Providence R.I.
This map accompanies
our report of this date.

MAP OF FENNER AVENUE

FROM CRANSTON ST. TO RESERVOIR AVE.

IN SIX SHEETS.

SCALE 80 FEET PER INCH.

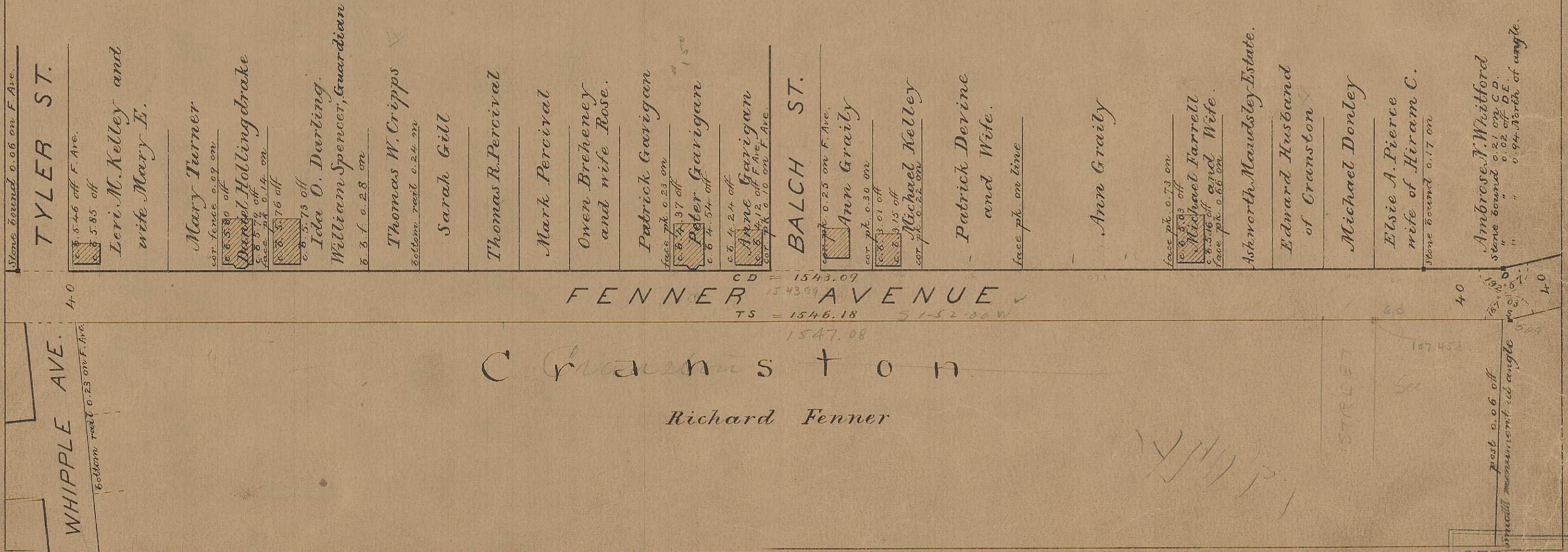
81
I-26

Changed to Niantic Ave Jan 18, 1900.

Part of State Highway System.

See R.I. Acts and Resolves No. 44. (H 569)

Approved Feb. 26, 1936.



81
I-26

OFFICE No. 5029
DRAWER
SHEET