

June 7, 1884.

010008

Providence R.I.
This map accompanies
our report of this date.

MAP OF FENNER AVENUE

FROM CRANSTON ST. TO RESERVOIR AVE.

IN SIX SHEETS.

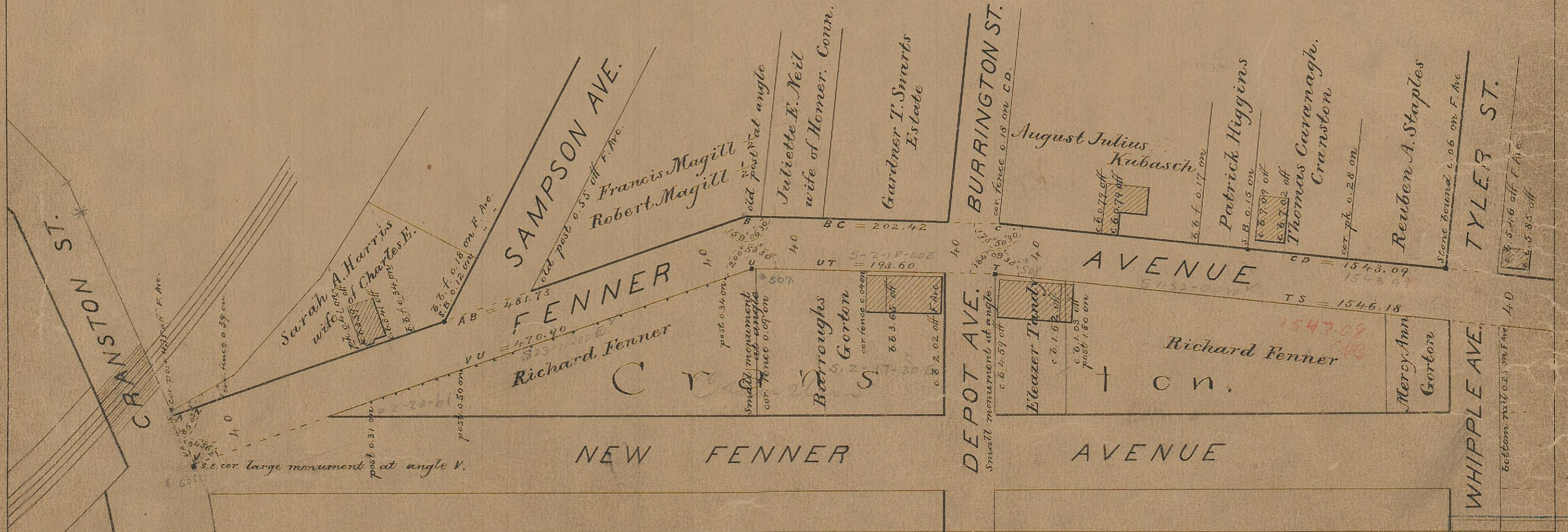
SCALE 80 FEET PER INCH.

East side 65.76 ft
West side 6602.38
2) 13204.49
6602.24

Say 27 mi over 1 1/4 miles

Changed to Niantic Ave. Jan. 18, 1900.

Part of State Highway System.
See R.I. Acts and Resolves No. 44 (H 569)
Approved Feb. 26, 1936.



81
I-25