

PROVIDENCE, R. I.  
CITY ENGINEER'S OFFICE.  
STREET LINE DEPT.

Jan. 7. 1886.

011570

Providence R.I.  
This plat accompanies  
our report of this date.

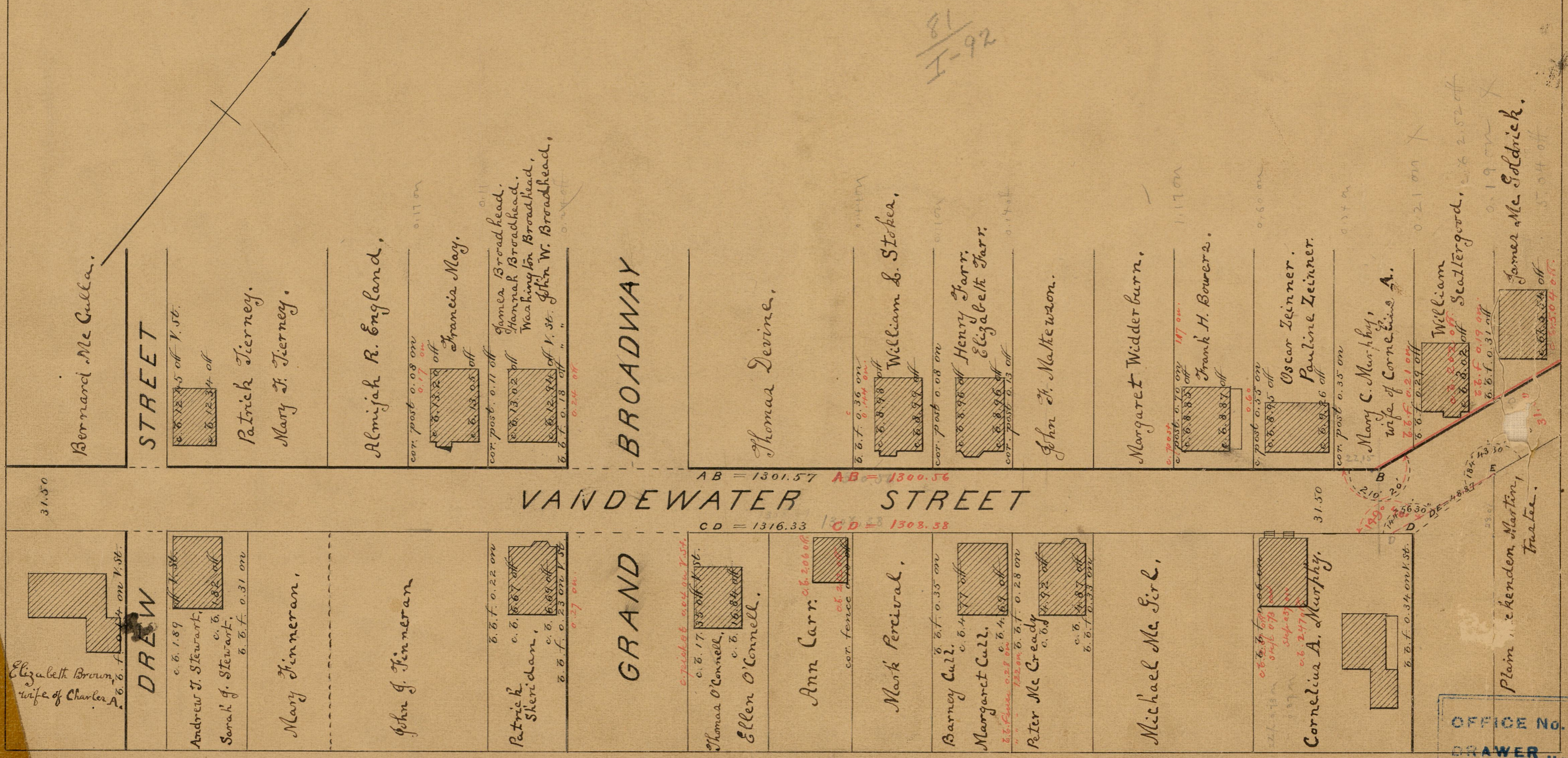
# VANDEWATER ST.

FROM DOUGLAS AVE. TO BRANCH AVE.

IN THREE SHEETS.

SCALE 50 FEET PER INCH.

81  
I-92



OFFICE No. 8663  
DRAWER " 81  
SHEET " I-92

81-I-92