

DBF B-65

PROVIDENCE, R. I.  
CITY ENGINEER'S OFFICE,  
STREET LINE DEPT.

October 3, 1885

011289

Providence R.I.  
This plat accompanies  
our report of this date.

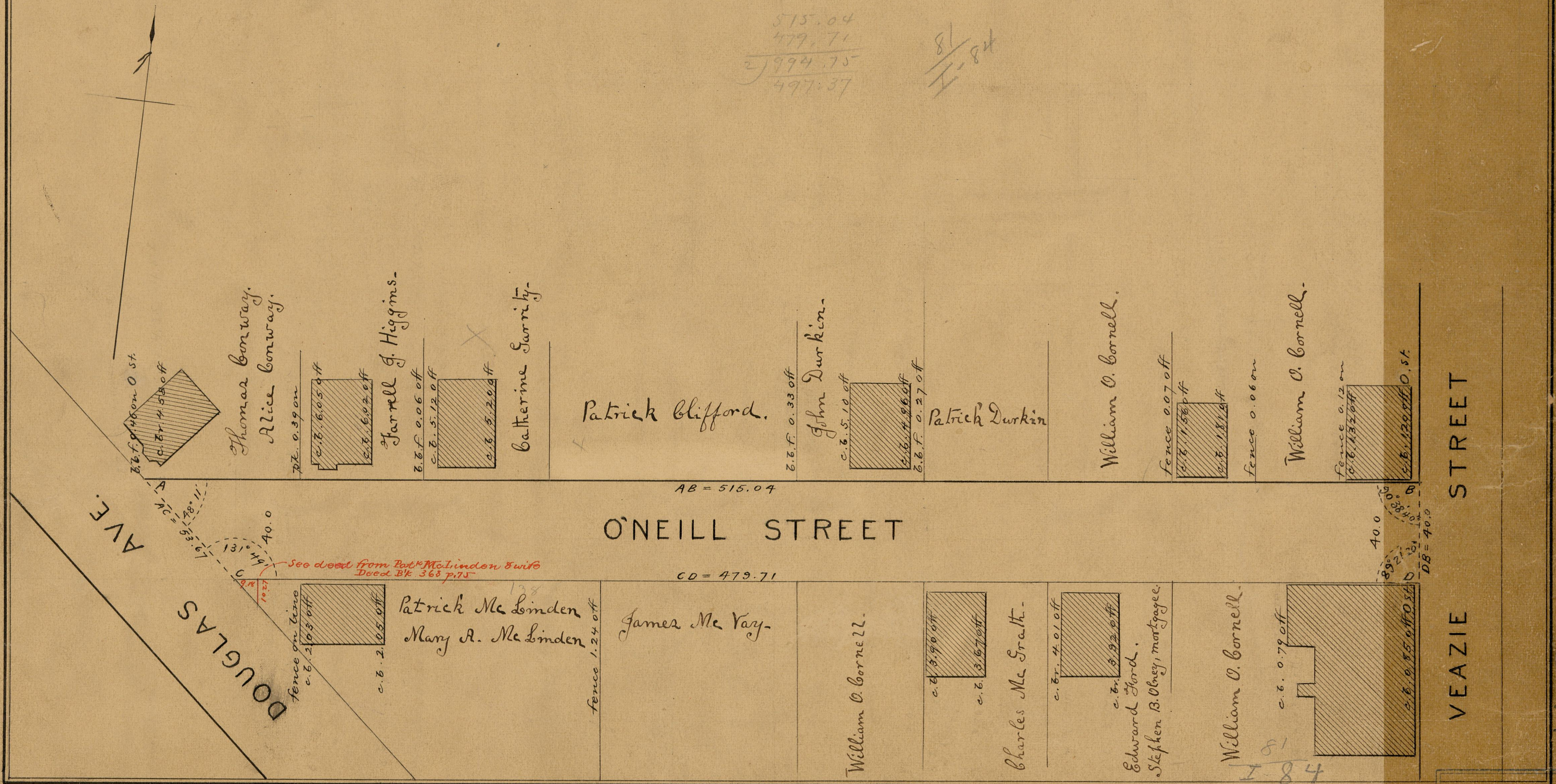
# PLAT OF O'NEILL STREET

FROM DOUGLAS AV. TO VEAZIE ST.

SCALE 40 FEET PER INCH.

575.04  
479.71  
-----  
2) 994.75  
497.37

81  
I-84



VEAZIE STREET

181  
I-84

OFFICE No  
DRAWN  
SHEET I. 84