

PROVIDENCE, R. I.
CITY ENGINEER'S OFFICE.
STREET LINE DEPT.

Sept 4, 1885

011184

Providence R.I.
This plat accompanies
our report of this date.

WHELDEN STREET

FROM PRINTERY ST. TO WEST RIVER ST.

IN TWO SHEETS.

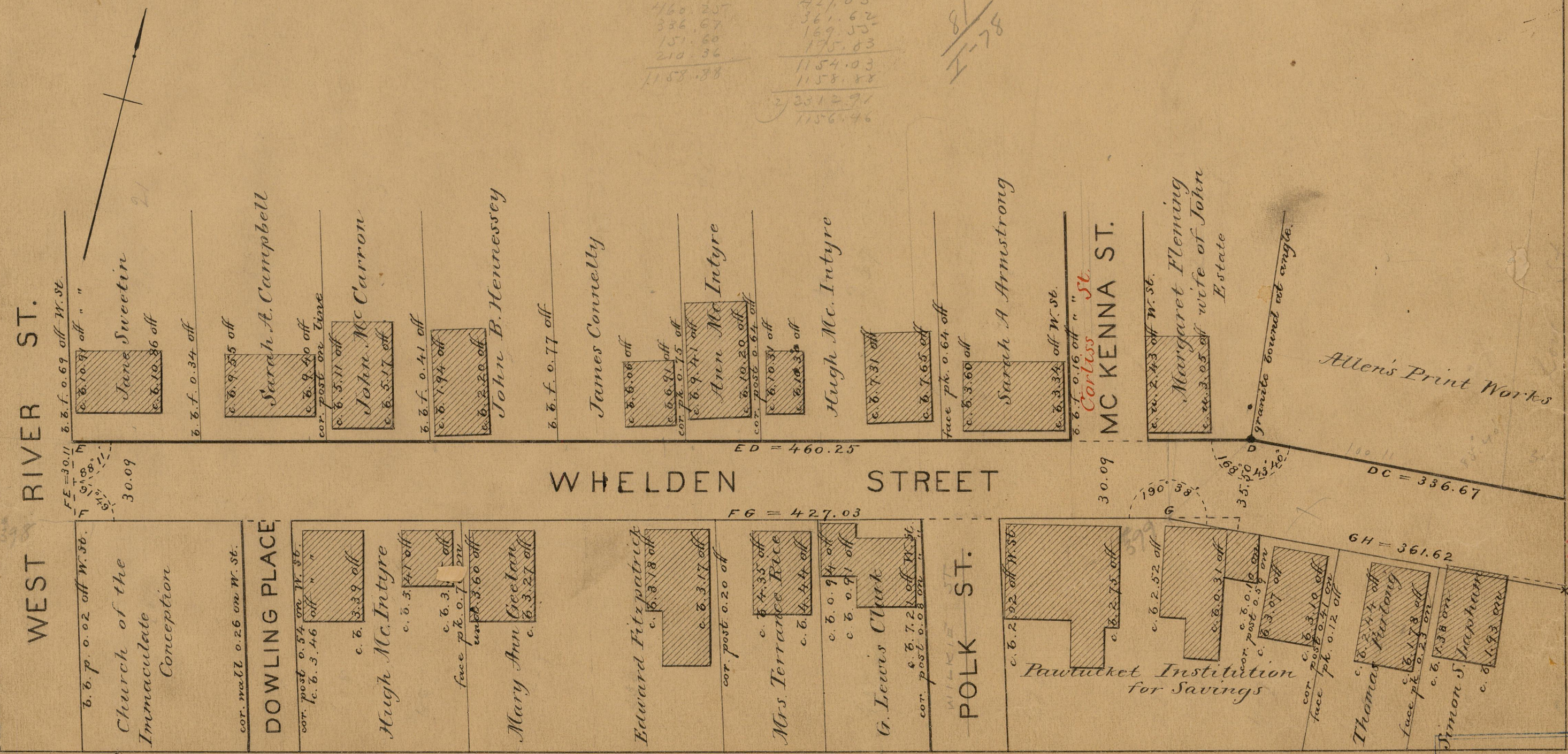
SCALE 40 FEET PER INCH.

Changed to Livingston St.
Dec. 7, 1893.

Abadiak Brown

460.25	427.03
336.67	361.62
151.60	169.55
210.36	175.83
1158.88	1154.03
	1158.88
	2372.91
	1156.46

*81
I-78*



Allen's Print Works

Pawtucket Institution for Savings

Thomas Purton

Simon S. Ingraham

*81
I-78*

*81
I-78*

OFFICE No. 8551
DRAWER " 31
SHEET " 78