

J.D.F.A212-60,61,168-177

PROVIDENCE, R. I.
CITY ENGINEER'S OFFICE.
STREET LINE DEPT.

Apr 9. 1884

09809

Providence R.I.
This map accompanies
our report of this date

MAP OF
OLNEY STREET

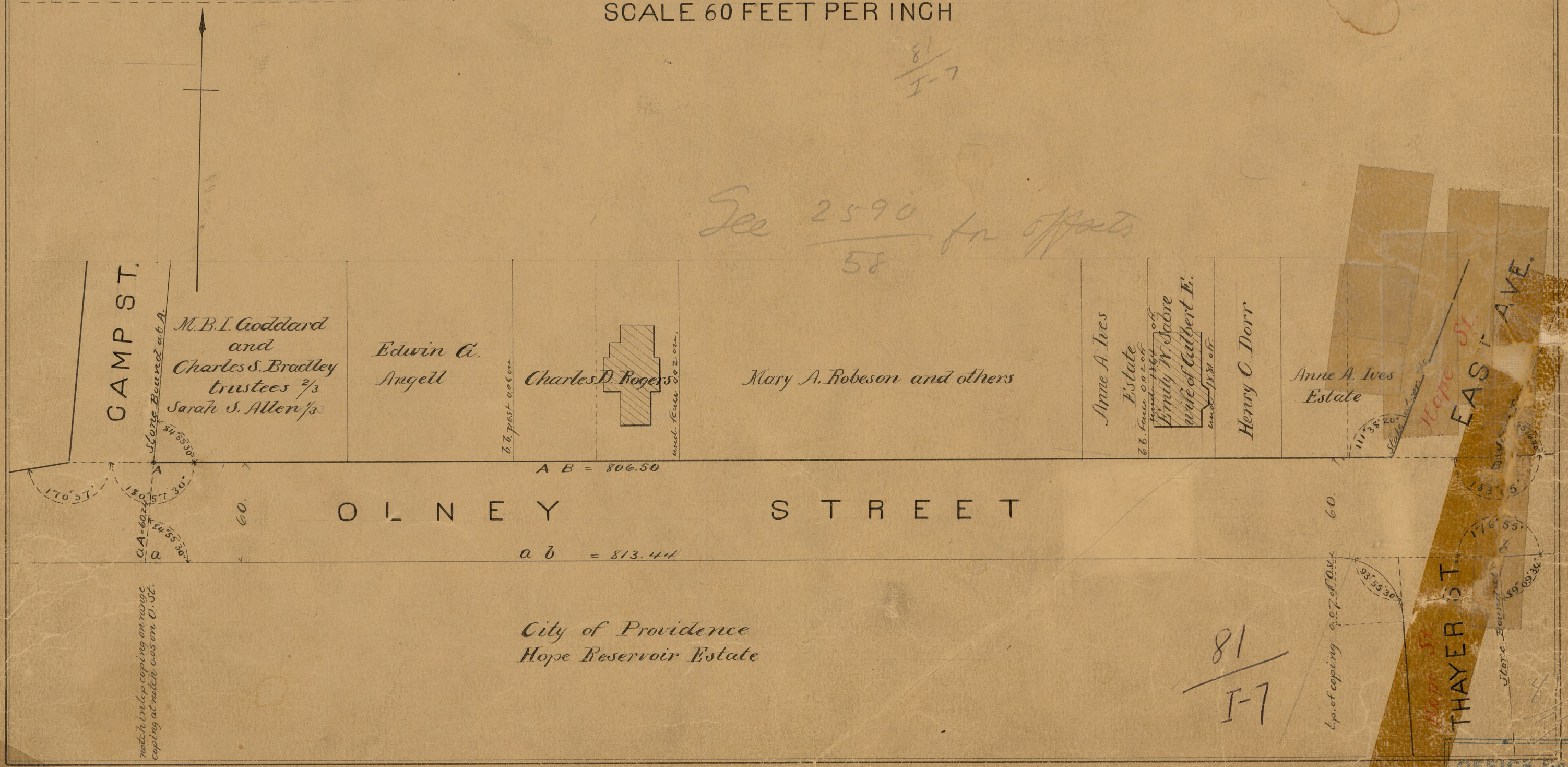
FROM CAMP ST. TO NORTH ST.

IN TEN SHEETS

SCALE 60 FEET PER INCH

81
I-7

See 2590 for offsets
58



match in top copying on range
copying at match 0.05 on O. St.

City of Providence
Hope Reservoir Estate

81
I-7

Copy of copying 0.07 of O. St.

OFFICE No. 7
DRAWER 11
127