

PROVIDENCE, R. I.
CITY ENGINEER'S OFFICE
STREET LINE DEPT.

June 27 1885
011034

Providence R. I. Sept 29 1885

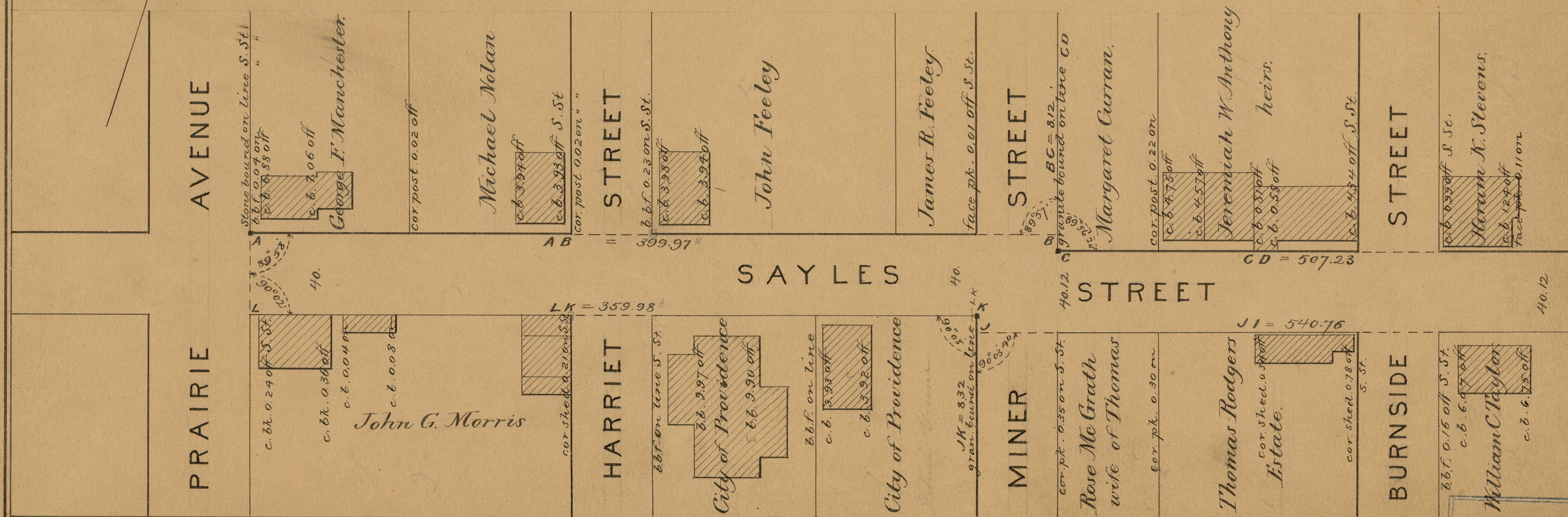
This plat accompanies
our report of this date.

W. M. Brayton
Jonathan S. Parkhurst
Robert C. Purbans

PLAT OF SAYLES STREET

FROM PRAIRIE AVE. TO EDDY ST.
IN THREE SHEETS

SCALE 50 FEET PER INCH



OFFICE No. 8511
DRAWER 81
SHEET I-68