

PROVIDENCE, R. I.  
CITY ENGINEER'S OFFICE.  
STREET LINE DEPT.

May 16. 1885

010884

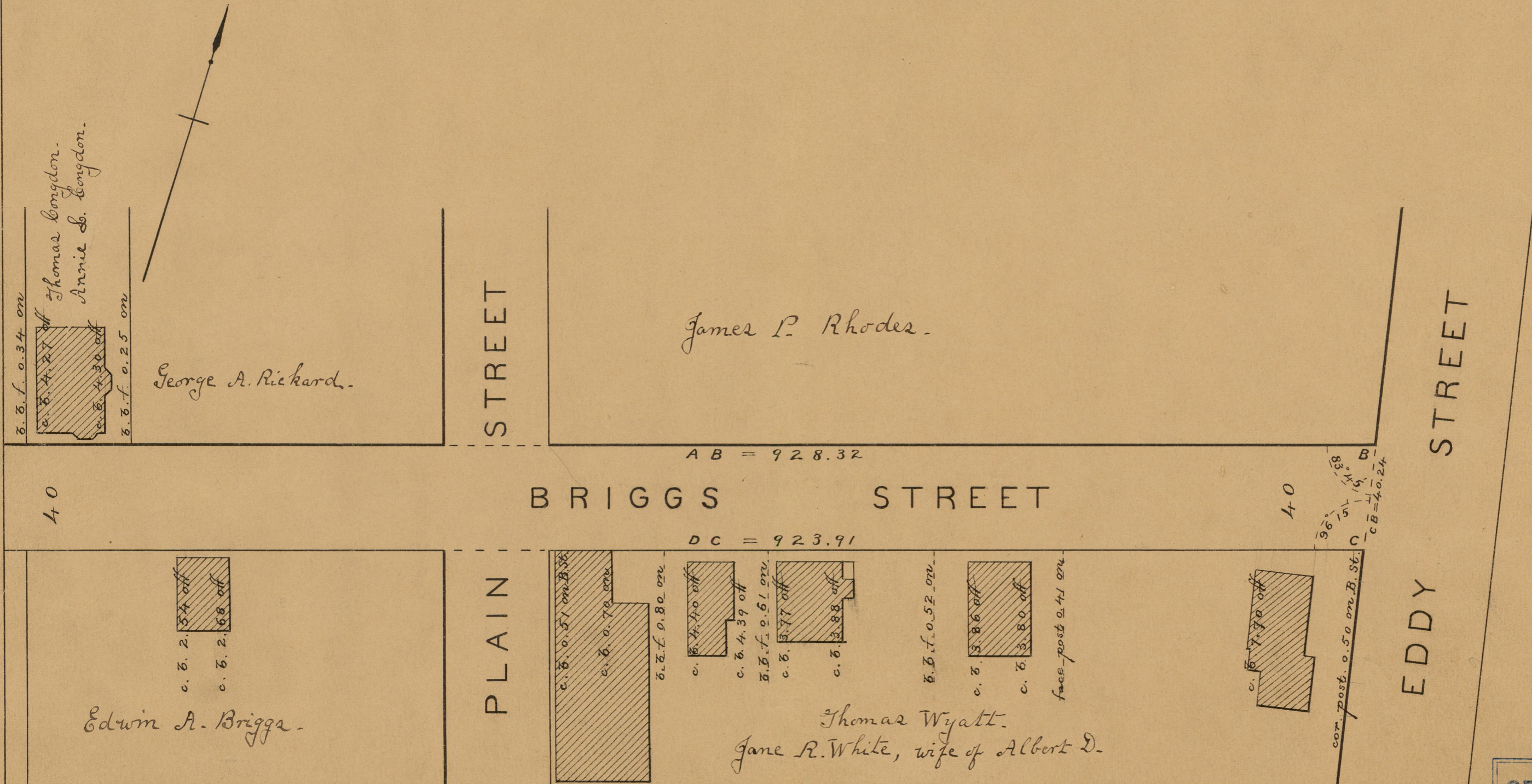
Providence R.I.  
This plat accompanies  
our report of this date.

# PLAT OF BRIGGS STREET

FROM OCEAN ST. TO EDDY ST.

IN TWO SHEETS.

SCALE 40 FEET PER INCH.



AB = 928.32

BRIGGS STREET

DC = 923.91

PLAIN STREET

Edwin A. Briggs.

Thomas Wyatt.  
Jane R. White, wife of Albert D.

James P. Rhodes.

George A. Richard.

40

40

EDDY STREET

EDDY STREET

81  
I-64

OFFICE No. 8339  
DRAWER ,, 81  
SHEET ,, I 64