

PROVIDENCE, R. I. *F.B.B-IX-156-157*

CITY ENGINEER'S OFFICE.
STREET LINE DEPT.

Jan. 27. 1885.

010677

Changed to Logan Avenue.

Sept. 3, 1891.

Providence R.I.
This map accompanies
our report of this date.

PLAT OF COLWELL STREET

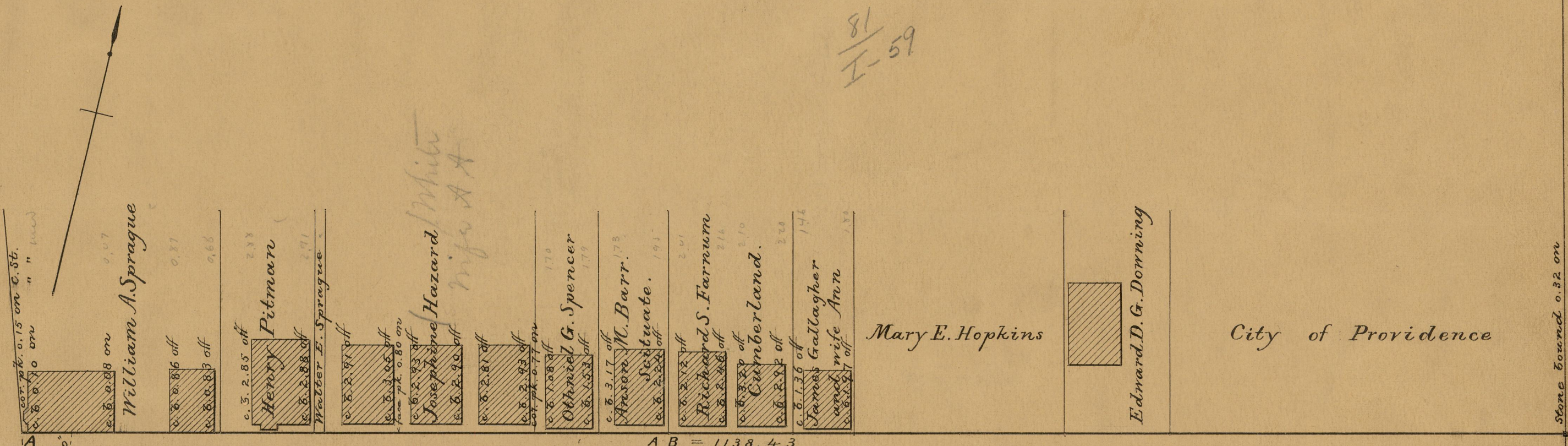
FROM PRAIRIE AVE. TO PLAIN ST.

IN TWO SHEETS.

SCALE 40 FEET PER INCH.

*81
I-59*

PRAIRIE AVENUE

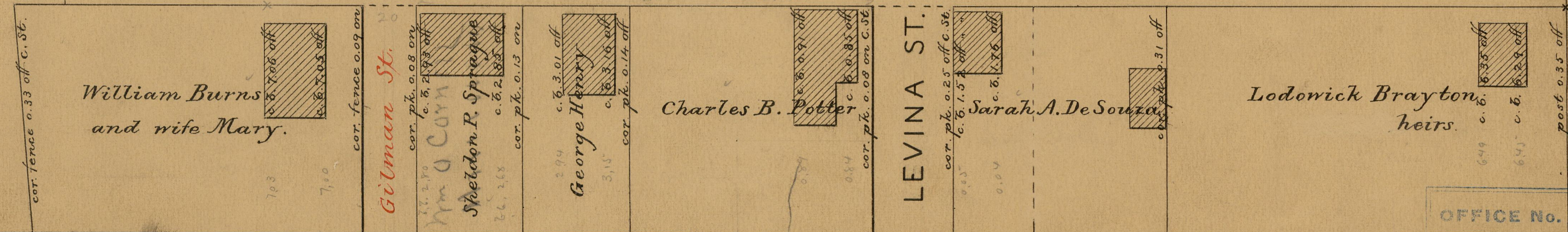


LOGAN AV
COLWELL STREET

DA = 50.15
94° 22' 50"
50

50

50



OFFICE No.	8361
DRAWER "	81
SHEET "	I-59

*81
I-59*