

247

F.B.R.VIII-155-156

PROVIDENCE, R. I.
CITY ENGINEER'S OFFICE.
STREET LINE DEPT.

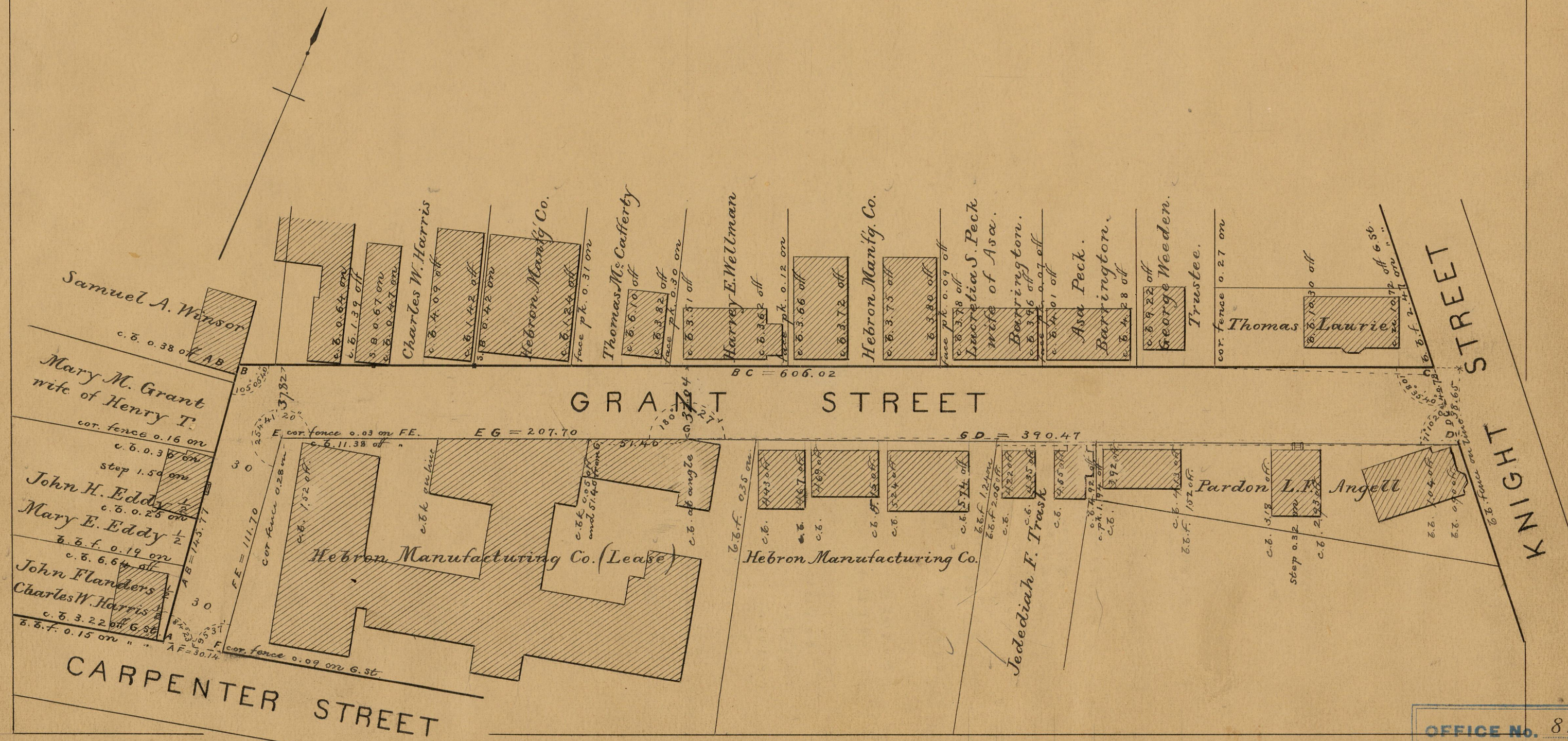
PLAT OF GRANT STREET

FROM KNIGHT ST. TO CARPENTER ST.
SCALE 50 FEET PER INCH.

Jan. 12. 1885.

010662

Providence R.I.
This plat accompanies
our report of this date.



OFFICE No.	8238
DRAWER "	81
SHEET "	I-56