

PROVIDENCE, R. I.
CITY ENGINEER'S OFFICE.
STREET LINE DEPT.

Apr. 2, 1884.

09794

Providence R.I.
This map accompanies
our report of this date.

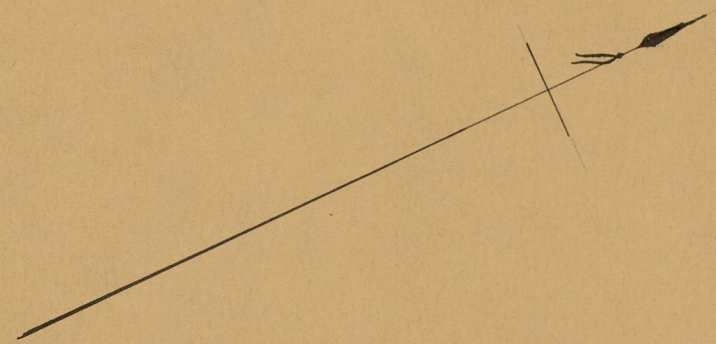
MAP OF

RIDGE STREET

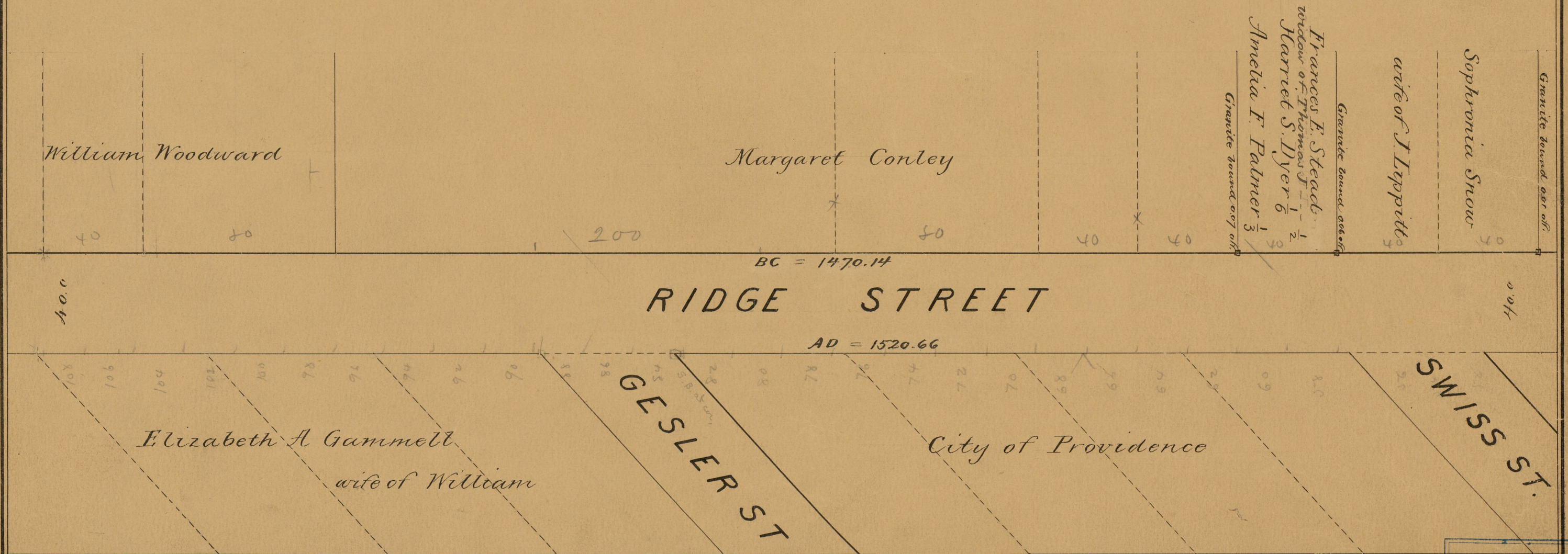
from the westerly line of Tobey St.
to Atwells Ave.

IN THREE SHEETS

SCALE 40 FEET PER INCH.



81
1-5



OFFICE No.	7921
DRAWN	71
SHEET	5