

PROVIDENCE, R. I.
CITY ENGINEER'S OFFICE.
STREET LINE DEP'T.

Aug. 16, 1884.

010269

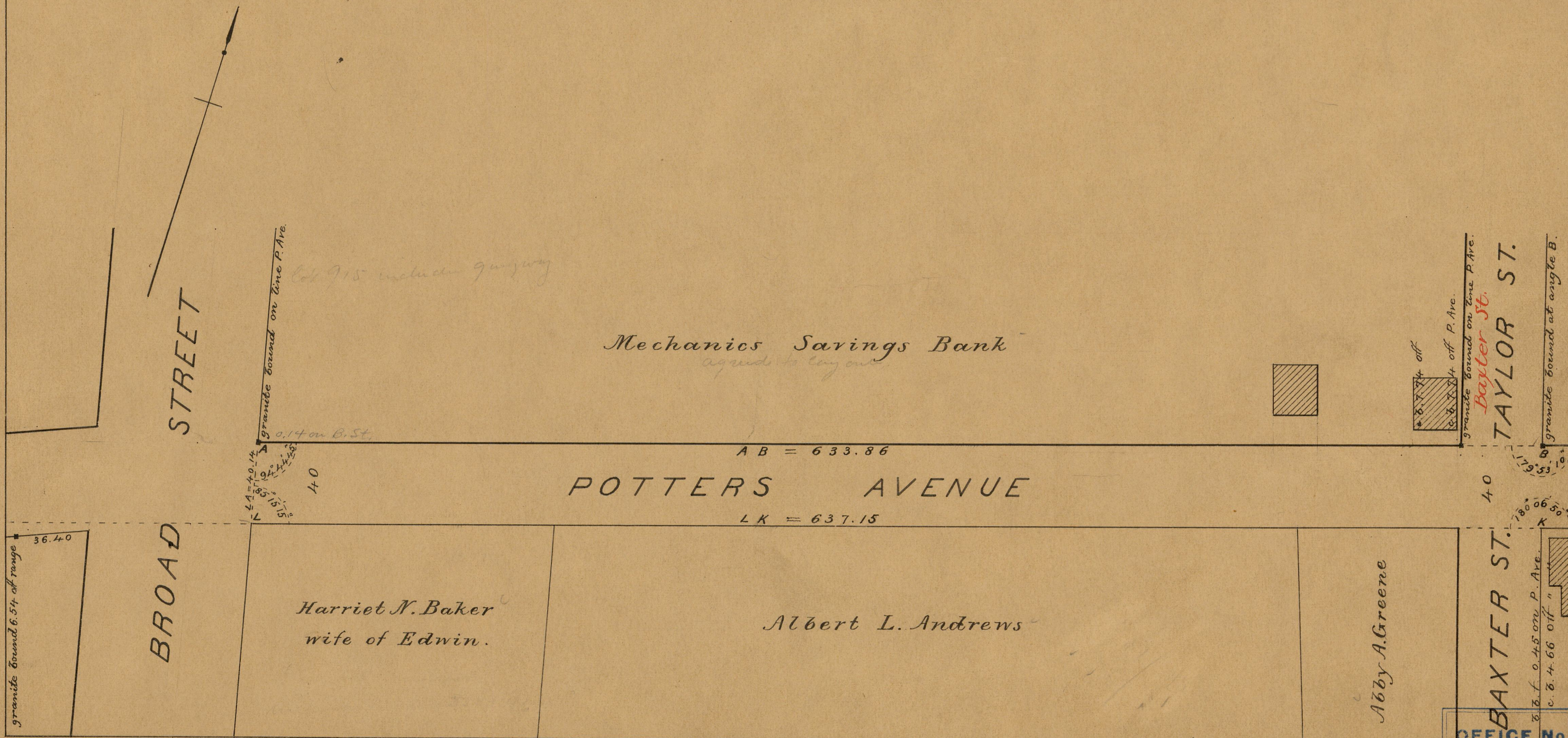
Providence R.I.
This map accompanies
our report of this date.

MAP OF
POTTERS AVENUE

FROM BROAD ST. TO OCEAN ST.

IN THREE SHEETS.

SCALE 50 FEET PER INCH.



OFFICE No.	8150
DRAWER	81
SHEET	I-43