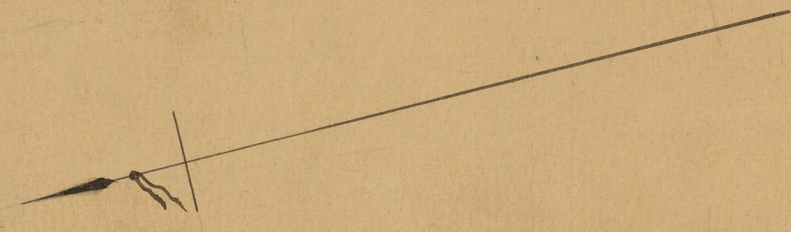


010344

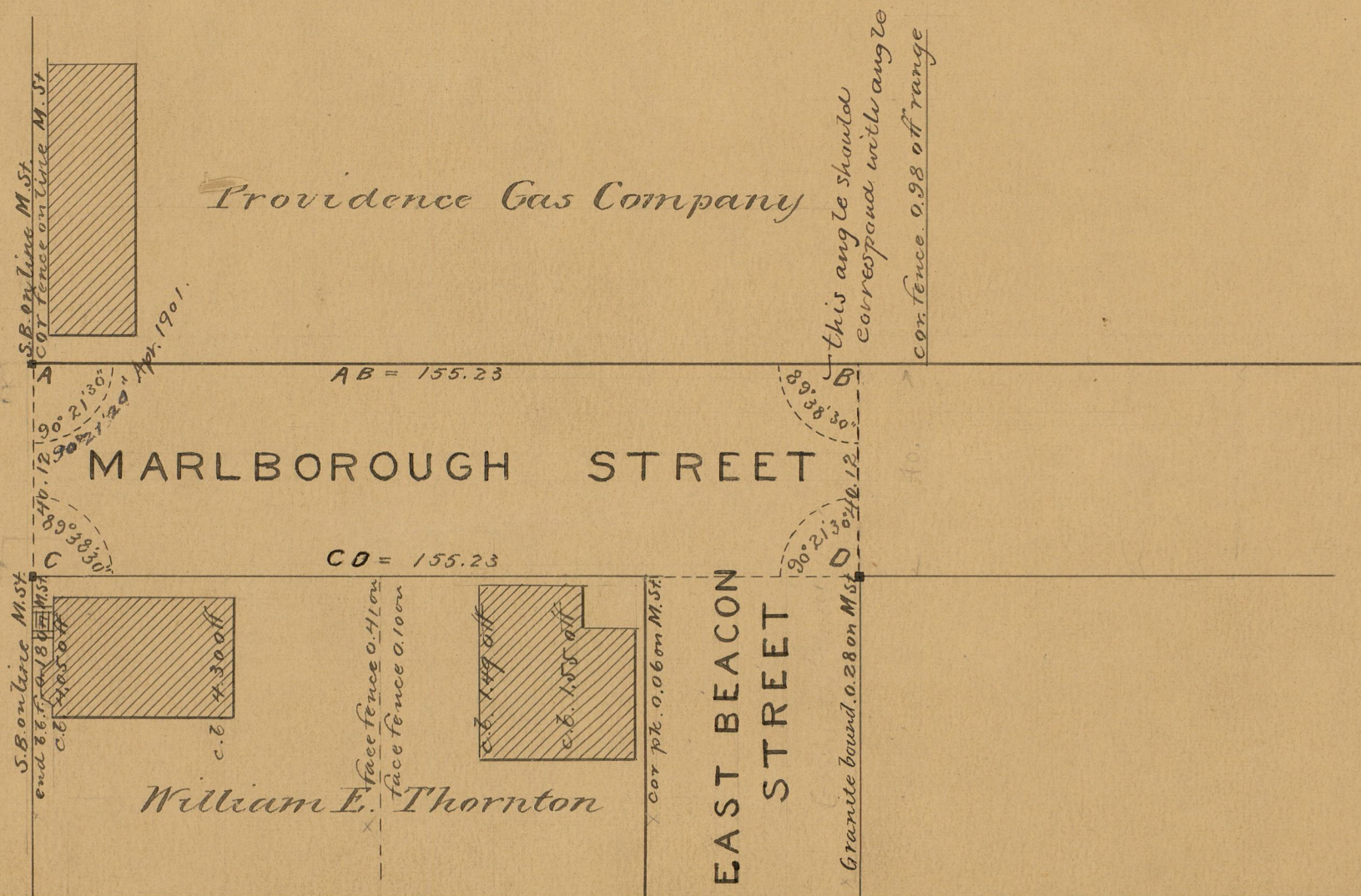
Providence R.I.
 This plat accompanies
 our report of this date

PLAT OF
MARLBOROUGH ST.
 FROM EAST BEACON ST. TO LOCKWOOD ST.
 SCALE 30 FEET PER INCH.

Changed to Landor St. Dec. 7, 1899.



LOCKWOOD STREET



*this angle should correspond with angle A.
 cor. fence 0.98 off range*

0.13
 40.10
 2 X