

PROVIDENCE, R. I.
CITY ENGINEER'S OFFICE.
STREET LINE DEPT.

Sept. 19, 1884

010341

Providence R. I. 1884
This plat accompanies
our report of this date.

PLAT OF

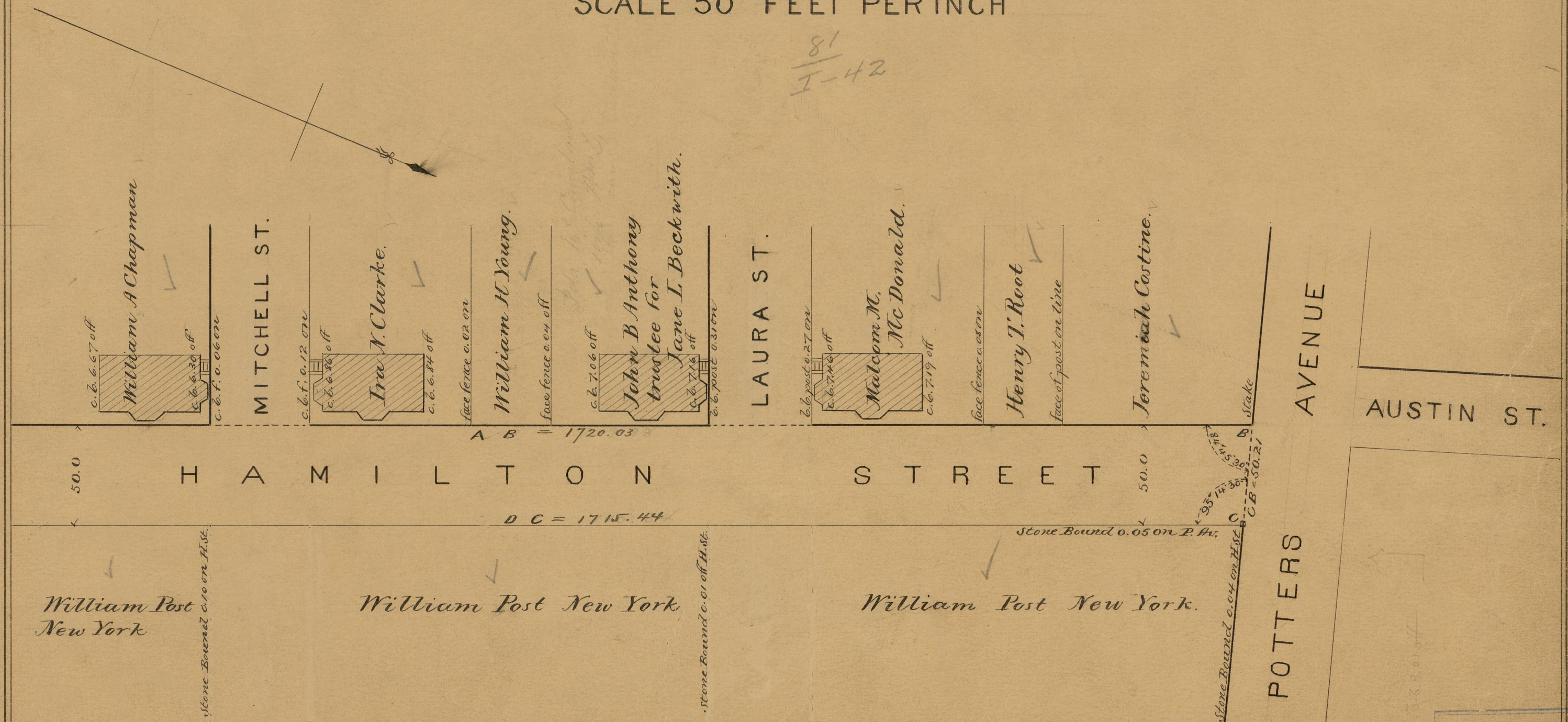
HAMILTON STREET

FROM POTTERS AV. TO ADELAIDE AV.

IN 3 SHEETS

SCALE 50 FEET PER INCH

81
I-42



OFFICE NO. 8129
DRAWER 81
SHEET I-42

1748