

PROVIDENCE, R. I.

CITY ENGINEER'S OFFICE
STREET LINE DEPT.

Sept. 19, 1884

010340

Providence R.I.
This plat accompanies
our report of this date

PLAT OF AUSTIN STREET

FROM POTTERS AVE. TO PUBLIC ST.

SCALE 50 FEET PER INCH

Changed to Hamilton Street

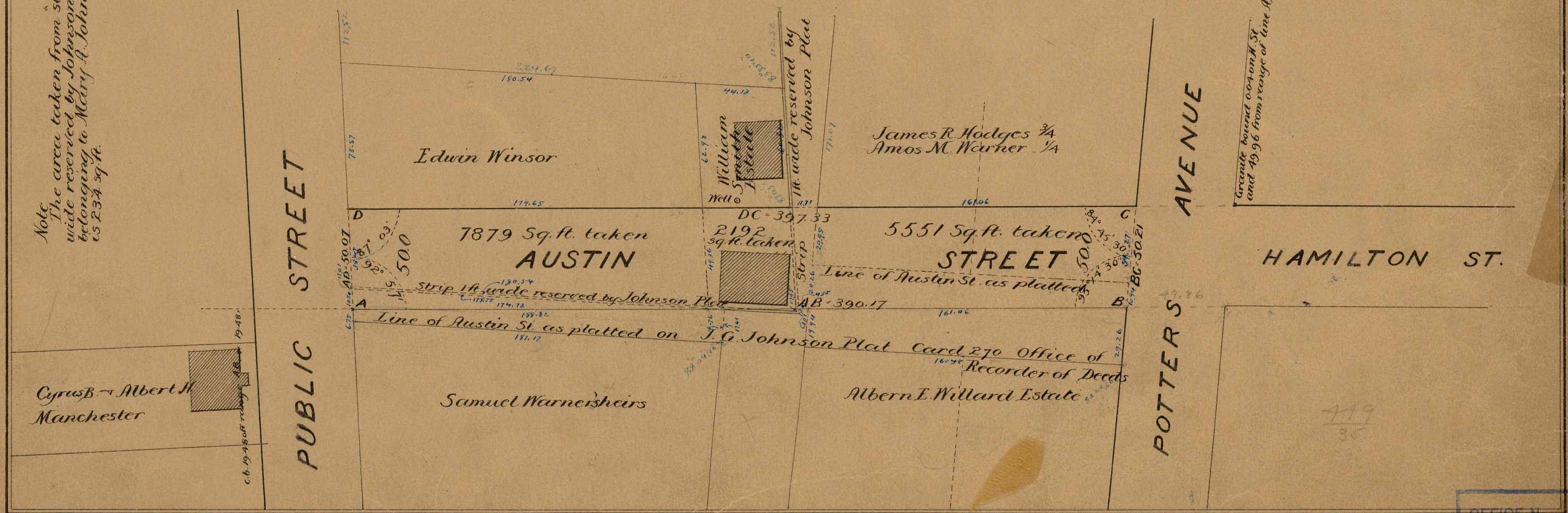
Oct. 18, 1888

*Notes in blue from plat 449/35 added Feb. 1921
made from original calculations*

*81
I-41*

*Note
The area taken from strip 1 ft.
wide reserved by Johnson Plat
belonging to Mctry & Johnson
is 234 sq. ft.*

*Granite bounded 00-00 on St
and 49.96 from record of line AB*



c. b. 19-48 off record

OFFICE No.	828
DRAWER	81
SHEET	1

*81
I-41*