

PROVIDENCE, R. I.
CITY ENGINEER'S OFFICE.
STREET LINE DEPT.

May 12, 1884

09933

Providence R.I.
This map accompanies
our report of this date.

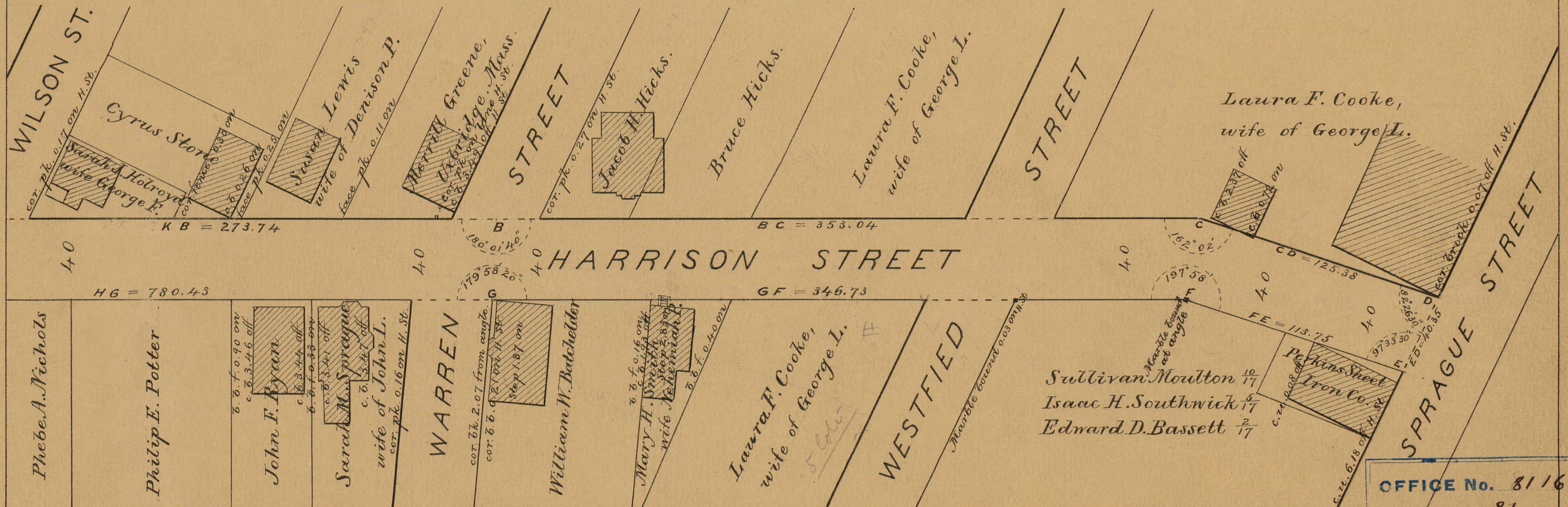
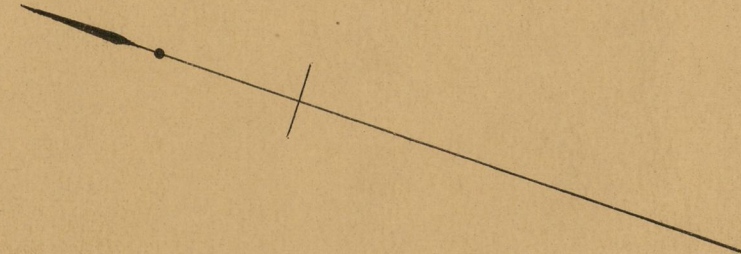
MAP OF HARRISON STREET

FROM CRANSTON ST. TO SPRAGUE ST.

IN TWO SHEETS.

SCALE 50 FEET PER INCH.

81
I-38



OFFICE No. 8116
DRAWER ,, 81
SHEET ,, I-38