

PROVIDENCE, R. I.
CITY ENGINEER'S OFFICE,
STREET LINE DEP'T.

May 12, 1884

09932

Providence R.I.
This map accompanies
our report of this date.

MAP OF HARRISON STREET

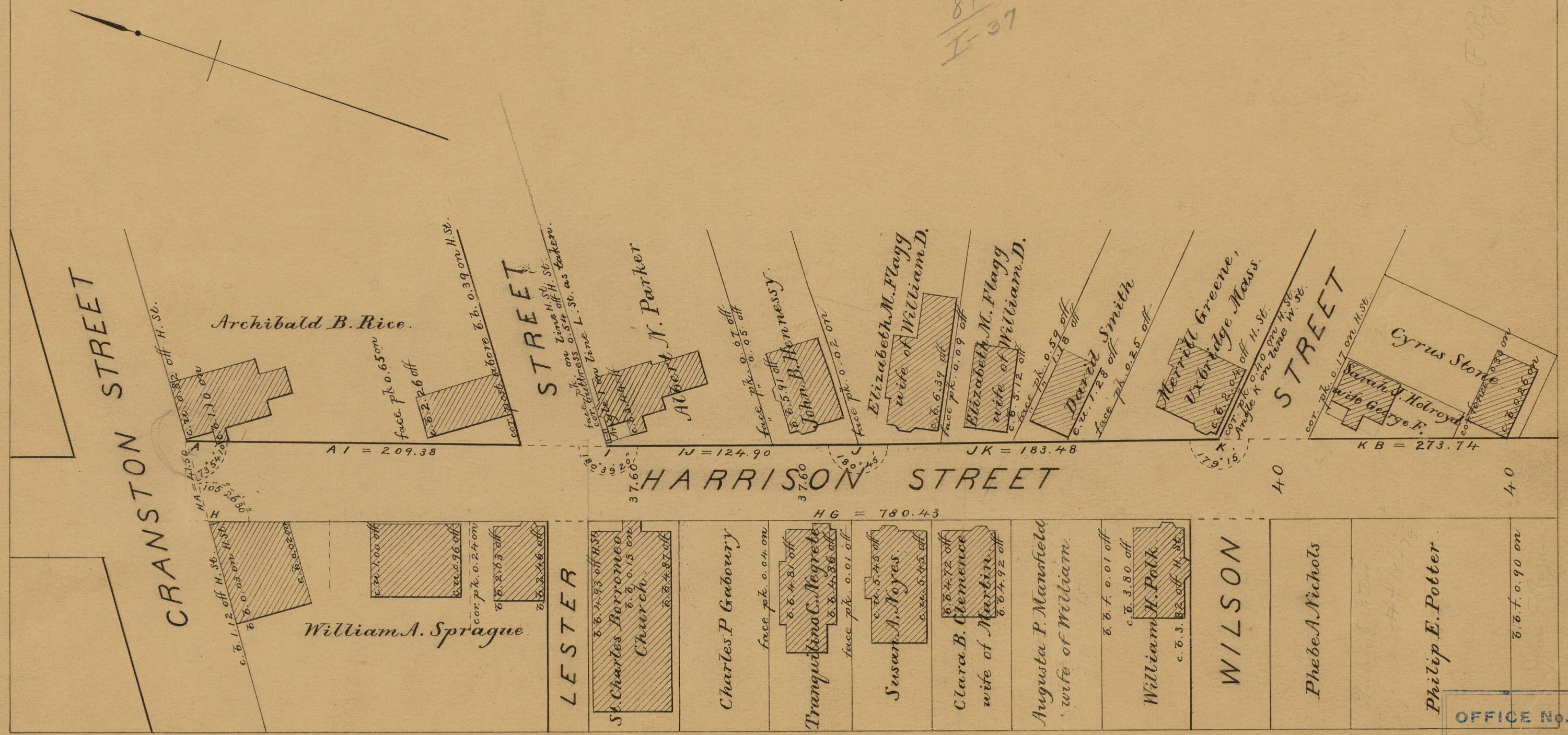
FROM CRANSTON ST. TO SPRAGUE ST.

IN TWO SHEETS.

SCALE 50 FEET PER INCH.

81
I-37

John Flynn



OFFICE No.	8115
DRAWER	81
SHEET	I-37

81
I-37