

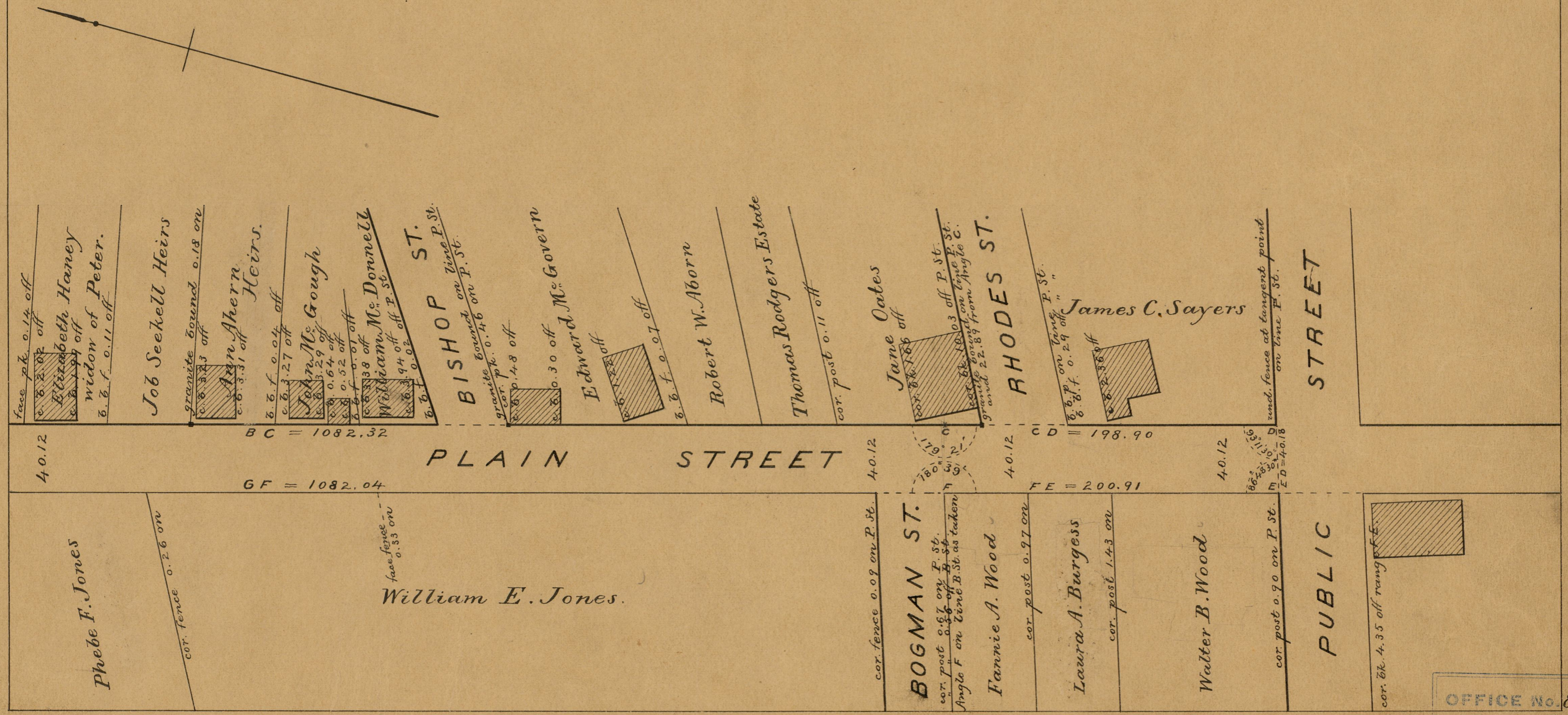
PROVIDENCE, R. I.
CITY ENGINEER'S OFFICE
STREET LINE DEPT.

July 10, 1884

010152

Providence R.I.
This map accompanies
our report of this date.

MAP OF
PLAIN STREET
FROM LOCKWOOD ST. TO PUBLIC ST.
IN THREE SHEETS.
SCALE 60 FEET PER INCH.



OFFICE No. 8107
DRAWER „ 81
SHEET „ I-35