

PROVIDENCE, R. I.  
CITY ENGINEER'S OFFICE  
STREET LINE DEPT.

June 7, 1884

010011

Providence R.I.  
This map accompanies  
our report of this date.

# MAP OF FENNER AVENUE

FROM CRANSTON ST. TO RESERVOIR AVE.

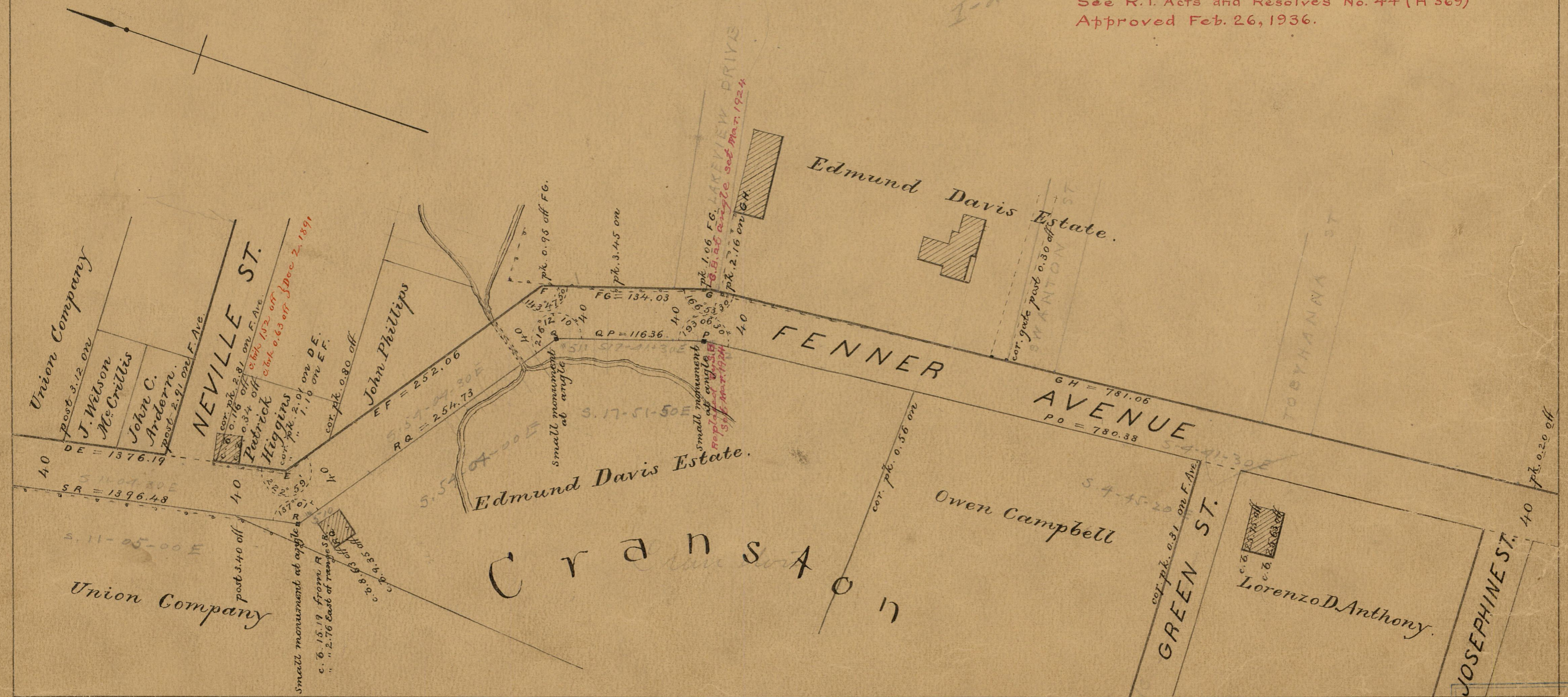
IN SIX SHEETS.

SCALE 80 FEET PER INCH.

April 16, 1885

81  
I-28

Changed to Niantic Ave. Jan. 18, 1900.  
Part of State Highway System.  
See R.I. Acts and Resolves No. 44 (H 569)  
Approved Feb. 26, 1936.



OFFICE No. 8031  
DRAWER 31  
SHEET 128