

PROVIDENCE, R. I.  
CITY ENGINEER'S OFFICE.  
STREET LINE DEPT.

June 7, 1884

010009

Providence R.I.  
This map accompanies  
our report of this date.

# MAP OF FENNER AVENUE

FROM CRANSTON ST. TO RESERVOIR AVE.

IN SIX SHEETS.

SCALE 80 FEET PER INCH.

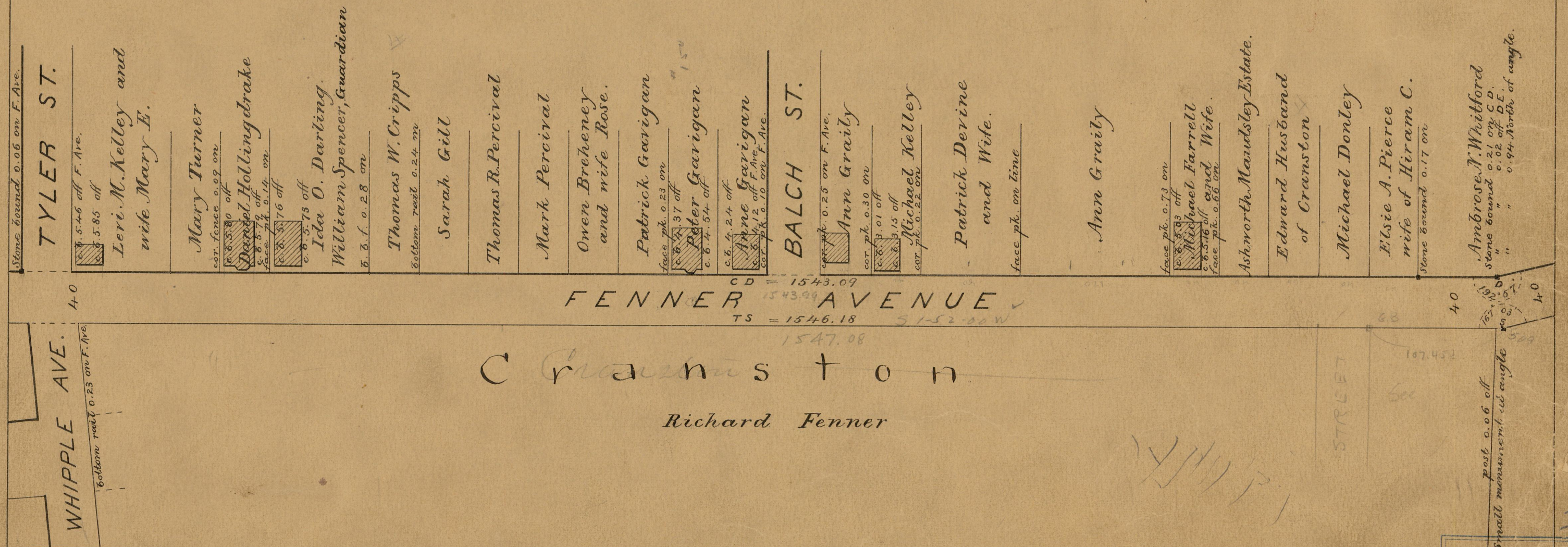
81  
I-26

Changed to Niantic Ave Jan 18, 1900.

Part of State Highway System.

See R.I. Acts and Resolves No. 44. (H 569)

Approved Feb. 26, 1936.



FENNER AVENUE

Cranston

Richard Fenner

STREET

OFFICE No. 609

81  
I-26

DRAWER

SHEET I-26