

PROVIDENCE, R.I.  
CITY ENGINEER'S OFFICE  
STREET LINE DEPT.

Aug 3, 1895

024281

# PLAT OF GODDARD STREET

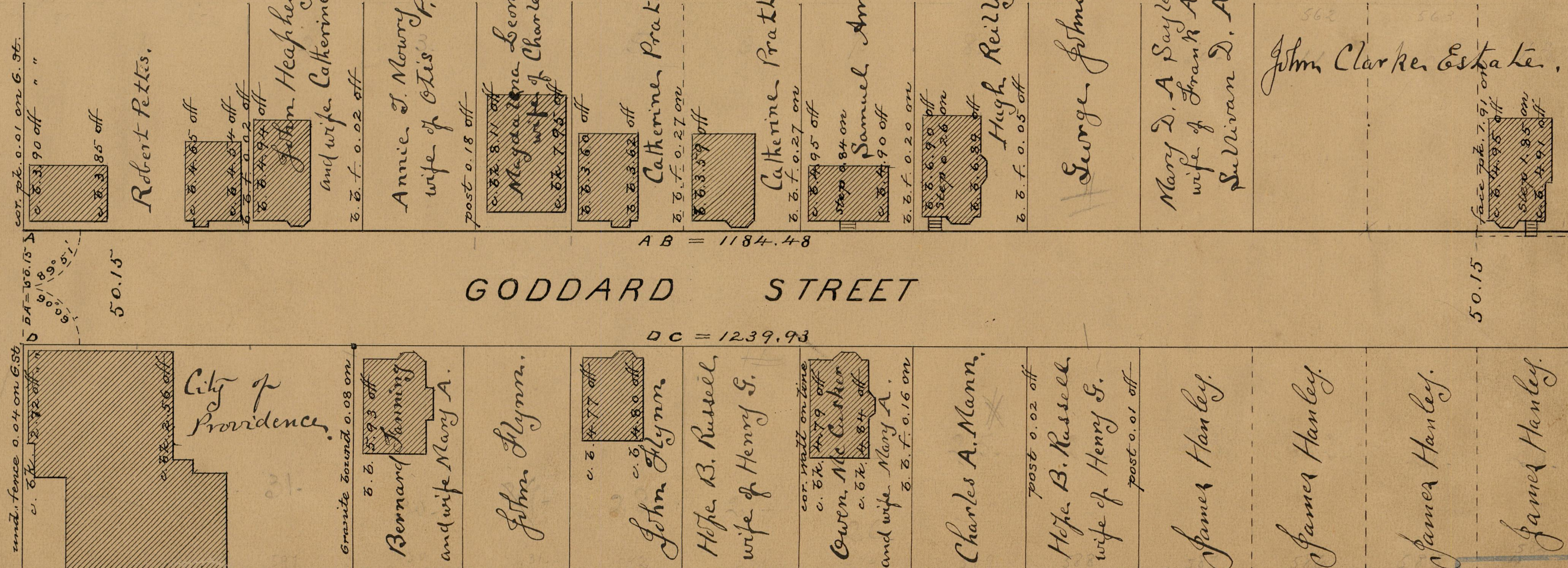
FROM CANDACE ST. TO DOUGLAS AVE.

IN TWO SHEETS.

SCALE 50 FEET PER INCH.



CANDACE ST.



175.90  
int. fence 0.04 on 6.56  
c. b. k. 2.72 off  
c. b. k. 0.01 on 6.96  
c. b. k. 0.90 off  
c. b. k. 0.85 off

Robert Pettis.

50.15  
c. b. k. 0.65 off  
c. b. k. 0.64 off  
c. b. k. 0.02 off  
John Hearhey  
and wife Catherine St.  
c. b. f. 0.02 off

Annie T. Mowry  
wife of Otis P.  
post 0.18 off

c. b. k. 8.11 off  
Magdalena Leonhardt  
wife of Charles A.  
c. b. k. 7.98 off

c. b. k. 3.67 off  
c. b. k. 3.62 off  
Catherine Pratt.  
c. b. f. 0.27 on  
c. b. k. 3.39 off

Catherine Pratt.  
c. b. f. 0.27 on  
c. b. k. 9.5 off  
c. b. k. 8.4 on  
Samuel Ames.  
c. b. k. 9.0 off

c. b. f. 0.20 on  
c. b. k. 6.90 off  
c. b. k. 2.6 on  
c. b. k. 6.88 off  
Hugh Reilly.  
c. b. f. 0.05 off

George Johnston.

Mary D. A. Sayles,  
wife of Frank Arthur,  
Sullivan D. Ames.

562 563  
John Clarke Estate.  
face 70.7.91 on  
c. b. k. 4.95 off  
c. b. k. 1.85 on  
c. b. k. 4.91 off

175.90  
int. fence 0.04 on 6.56  
c. b. k. 2.72 off  
c. b. k. 2.56 off  
City of Providence.

Granite bound 0.08 on  
c. b. k. 5.93 off  
Bernard Manning  
and wife Mary A.

John Flynn.

c. b. k. 4.77 off  
c. b. k. 4.80 off  
John Flynn

Hope B. Russell,  
wife of Henry S.

cor. wall on line  
c. b. k. 4.79 off  
Owen Mc Carver  
and wife Mary A.  
c. b. k. 4.84 off  
c. b. f. 0.16 on

Charles A. Mann.

post 0.02 off  
Hope B. Russell,  
wife of Henry S.  
post 0.01 off

James Hanley.

James Hanley.

James Hanley.

James Hanley.

OFFICE No. 12667  
DRAWER 81  
SHEET I-21