

PROVIDENCE, R. I.  
CITY ENGINEER'S OFFICE.  
STREET LINE DEPT.

Apr. 9 1884

09818

387  
437

# MAP OF OLNEY STREET

FROM CAMP ST. TO NORTH ST.

IN TEN SHEETS

SCALE 60 FEET PER INCH.

*Changed to Cole Avenue. Apr. 2. 1896.*

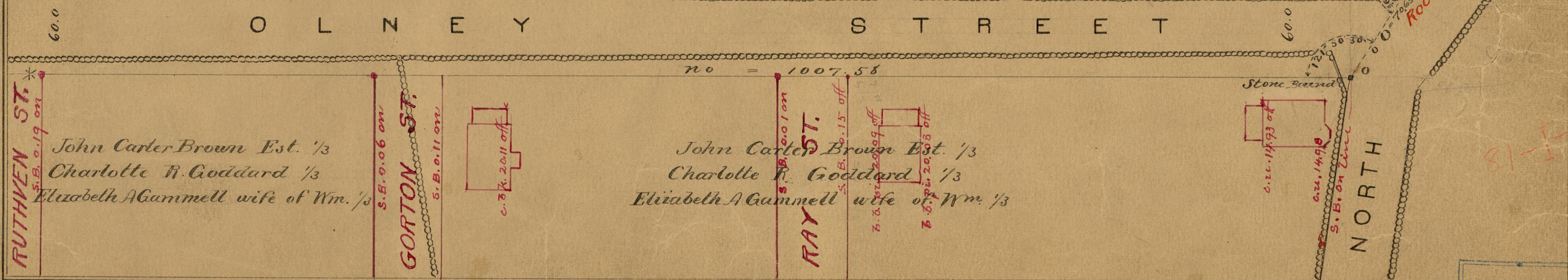
81  
I-16

Frances A. Smith

Stephen Dexter Heirs Est.

HP = 1033.13  
NO = 1046.18

NO = 1007.58



OFFICE No. 7916  
DRAWER  
81  
I-16