

PROVIDENCE, R. I.  
CITY ENGINEER'S OFFICE.  
STREET LINE DEPT.

Apr 9, 1884

09815

Providence R. I.  
This map accompanies  
our report of this date.

# MAP OF OLNEY STREET

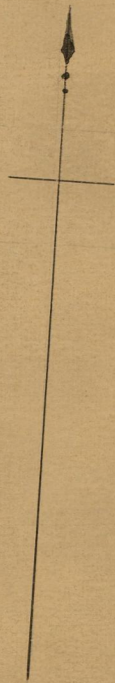
FROM CAMP ST. TO NORTH ST.

IN TEN SHEETS

SCALE 60 FEET PER INCH

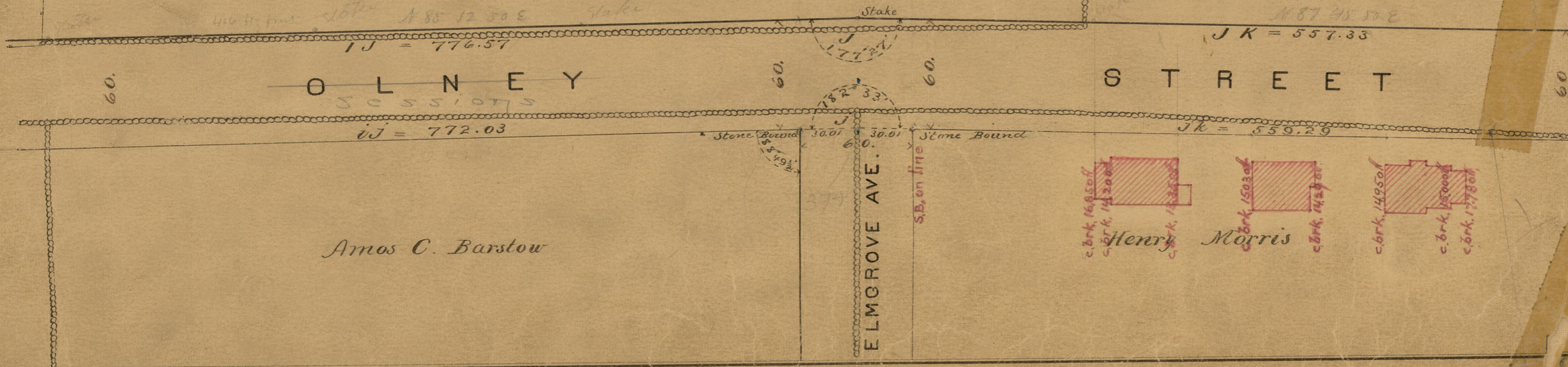
*Changed to Cypress street, Apr. 2, 1896*  
*" " " Sessions " Oct. 18, 1906*

*81  
I-13*



*Almira T Metcalf*

*John Morris*



*ELM GROVE AVE.*

*Amos C. Barstow*

*Henry Morris*  
*John Morris*

*81  
I-13*

OFFICE No  
DRAWN

*81  
I-13*