

CITY ENGINEER'S OFFICE,  
STREET LINE DEPT.

July 9, 1886.

012043

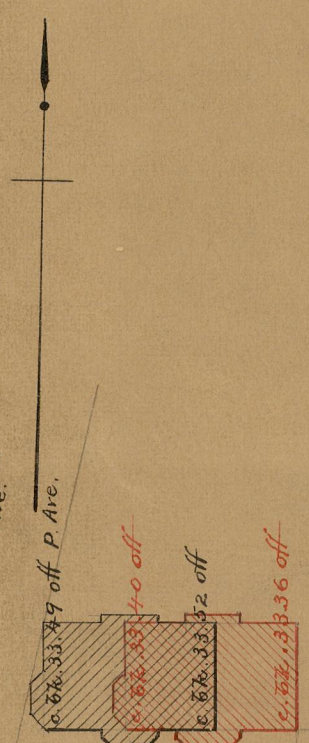
PLAT OF

# PRINCETON AVENUE

FROM UPDIKE ST. TO GREENWICH ST.

SCALE 50 FEET PER INCH.

Providence R.I.  
This plat accompanies  
our report of this date.



*William D. Davis*

$AB = 710.06$

PRINCETON AVENUE

$DC = 719.37$

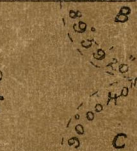
*Robert Knight.*



Elmwood  
GREENWICH STREET

STREET

UPDIKE



81 I  
100

81  
I-100

OFFICE No. 100

DRAWER 31

I-100

granite bound o. 17 on range AB.

granite bound o. 9 off range DC.