

PROVIDENCE, R. I.
CITY ENGINEER'S OFFICE,
STREET LINE DEPT.

Apr. 9, 1884

09812

Providence R. I.
This map accompanies
our report of this date.

MAP OF OLNEY STREET

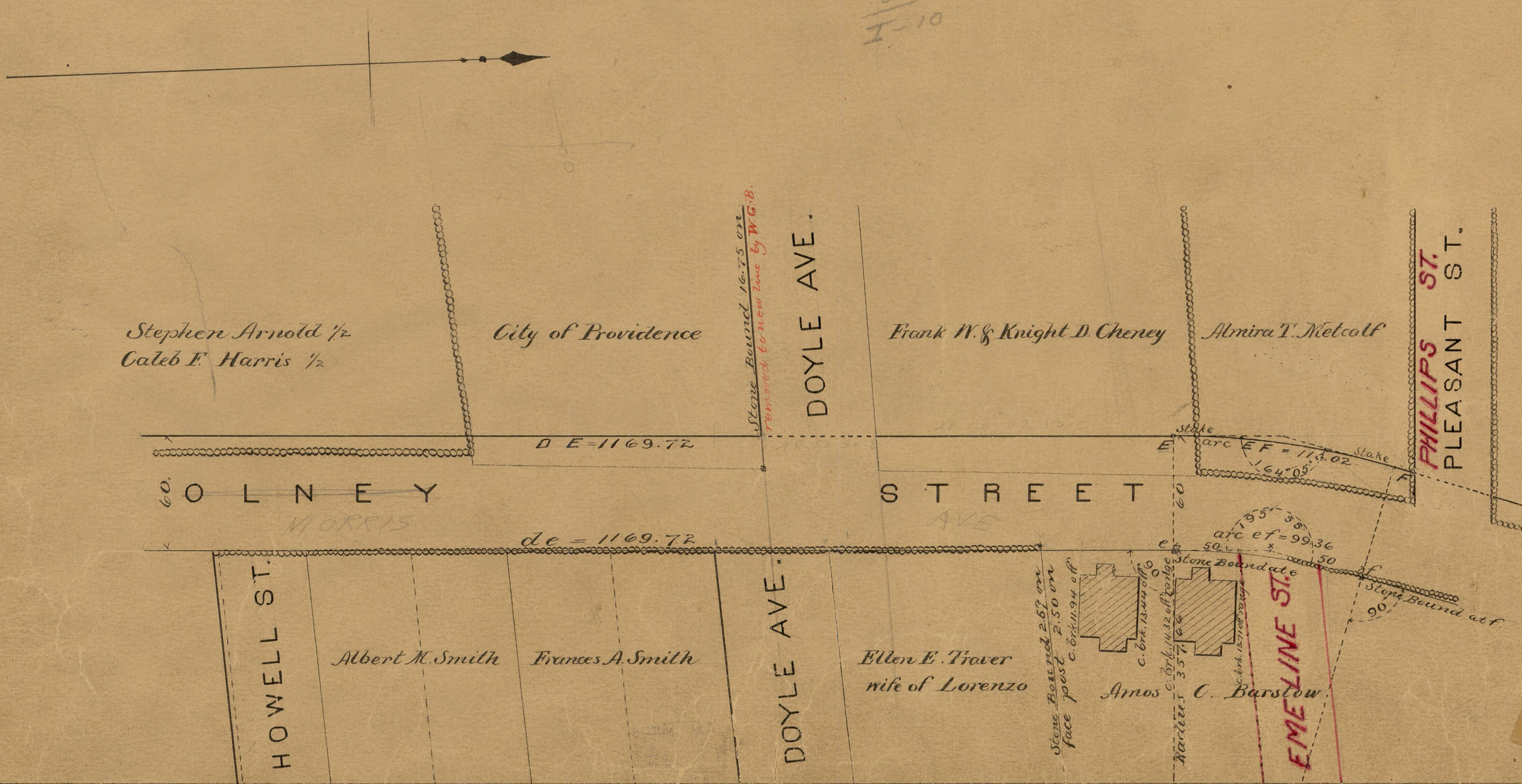
FROM CAMP ST. TO NORTH ST.

IN TEN SHEETS

SCALE 60 FEET PER INCH

Changed to Morris Ave.

81
I-10



81
I-10

OFFICE No. 79
DRAWER